

Table of Contents

	<u>Page</u>
Table of Contents	1
Introduction	2
Potato Certification Association of Nebraska Staff, Executive Council, and Advisory Committee	3
History of the Potato Certification Association of Nebraska	4
Information Regarding Field, Bin and Shipping Point Inspections	5
Variety List	7
2023 Nebraska Seed Potato List	9
Field Planting/Nomenclature Table	19
Notice to Buyers	20
2023 Nebraska Seed Potato Directory	21
Notes	22



INTRODUCTION TO THE 2023 SEED POTATO BOOK

This is the official Nebraska Seed Potato Directory of the Potato Certification Association of Nebraska (PCAN) for the 2023 crop year. The Potato Certification Association of Nebraska (PCAN) is a not-for-profit organization and official designated agency of the University of Nebraska-Lincoln. The lots listed in this directory are those that have passed both summer field inspections, with some lots receiving three inspections. The following are required for a lot to be considered certified within the state of Nebraska:

- Originate from planting stocks that were grown in a sterile environment and underwent proper disease testing.
- Pass both summer field inspections. The potato seed stocks on this list represent all seed fields which have passed field inspections and are within the tolerance for diseases and mixtures.
- Pass a post-harvest test. PCAN conducts post-harvest tests in one of three ways:
 - A grow out. Samples are grown out in a warm location sometime between November and January and are visually inspected for the presence of PVY, PLRV or other diseases. ELISA tests are conducted on these lots for PVY or PLRV at the request of the grower. If no laboratory test is conducted as part of the grow out, this will be indicated on the North American Plant Health Certificate with an NT (no-test) designation.
 - In a greenhouse. Samples are planted in a greenhouse close to the PCAN office, and not offsite at a warm location. Visual inspections and laboratory testing are conducted the exact same way as in a traditional grow out.
 - Sprout testing. Samples are allowed to sprout, and ELISA tests are conducted on the sprouts. This is the preferred method for varieties with long dormancy.
- Eligible seed lots shall be sampled for a winter test and be approved before replanting as certified seed potatoes in Nebraska.
- Pass a State shipping point inspection.
- Adhere to all the requirements with the Rules and Regulations of the Potato Certification Association of Nebraska. These Rules and Regulations can be found at the official website of the Potato Certification Association of Nebraska: <http://nebraskapotatoes.com>.
- Nebraska certified seed potatoes may be sorted for sale in one of three grades (Blue, Yellow, Green). See **Shipping Point Inspections** for a more detailed description of these grades.



Potato Certification Association of Nebraska staff, Executive Council and Advisory Committee

Purpose

The Potato Certification Association of Nebraska (PCAN) is a non-profit, non-stock corporation which conducts inspection and certification of potatoes, when authorized by the College of Agriculture of the University of Nebraska in pursuant to sections 81-2, 149 to 81-2, 154 (Reissue Revised Statutes of Nebraska 1943). The agency was designed to encourage the production of potatoes and other crops for seed purposes in the states of Nebraska and Wyoming.

How We Are Structured

In 1931 the Vice Chancellor of the Institute of Agriculture and Natural Resources at the University of Nebraska, under State Law, House Roll 67, designated PCAN as a potato certification agency. Under the law of Nebraska, PCAN was incorporated on June 4, 1951. The Vice Chancellor (with an Advisory Committee), specifies the Standards for Certification, and approves rules and procedures used by the certifying agency. The Advisory Committee is composed of the department heads of Agronomy and Horticulture, Entomology, and Plant Pathology with the Associate Dean of Agriculture Research serving as chairperson.

The Executive Council of PCAN is responsible for financing and administering the regulations and for establishing proper conduct of potato seed certification in the states of Nebraska and Wyoming. The Executive Council consists of four active members who are elected at the Association’s Annual meeting. The manager of PCAN also sits on the Executive Council and serves as the Council’s secretary. A full-time staff, consisting of a Manager and Assistant Manager, is overseen by the Executive Council to conduct day-to-day operations for the agency. These duties include, but are not limited to: field inspections, bin inspections, shipping point inspections, laboratory activities, post-harvest winter tests, representing the agency at professional meetings and promoting Nebraska-raised seed potatoes. The manager and assistant manager of PCAN also provide leadership and assistance to seasonal and part time staff. The structure of Nebraska Potato Certification is detailed in Figure 1.

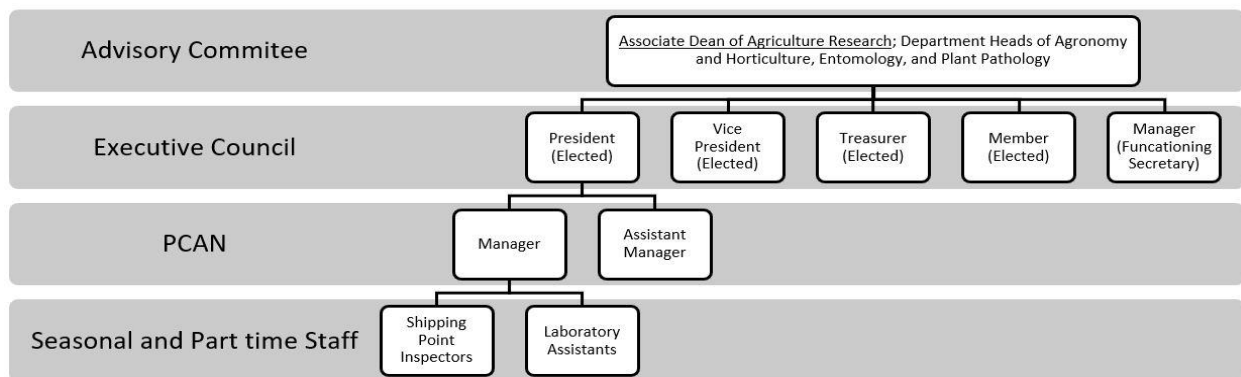


Figure 1. Nebraska Potato Certification structure

Potato Certification Association of Nebraska Administrative Bodies

Members of the Executive Council

Lisa Hickman – President; Alliance, Nebraska
 Josh McBride – Vice President; North Platte, Nebraska
 Jon Gilley – Treasurer; Atkinson, Nebraska
 Chase Engel – Member; Scottsbluff, Nebraska
 Chris Toetdle – Member; Alliance, Nebraska
 Jenn Dillinger – Secretary/Manager; Scottsbluff, Nebraska

Seed Advisory Committee

Dr. Mike Boehm - Vice Chancellor
 Dr. Hector Santiago – Chairman
 Dr. Loren Giesler – Plant Pathology
 Dr. Gary Brewer – Entomology
 Dr. Richard Ferguson – Agronomy and Horticulture

Current Staff of the Potato Certification Association of Nebraska

Jenn Dillinger.....Administrations/Laboratory Manager
Adrian Gonzalez.....Operations Manager
Thomas Thornton.....BYU-I Intern (Shipping point/Summer Field Inspector)

Shipping Point Inspectors:

Gary Leever, Adrian Gonzalez, Brandon Roland, John Wickman, Derek Thompson, Brandon Holman, Davey Picket Pin, Randy Kleager

Summer Field Inspectors:

Gary Leever, Michael Kaus, Adrian Gonzaelez, Tanner Garcia, Daniel Hinojosa, Alaina Hoffman

Laboratory, Office, and Bin Inspection:

Kaylee Henthorn, Makenna Quick, Aiden Digmann, Tyler Kaus

History of the Potato Certification Association of Nebraska

Nebraska began seed potato certification in Nebraska in 1918, through the University of Nebraska-Lincoln (UNL). Nebraska growers at that time were facing many issues with the deterioration of seed in field and storage. In order to combat this Dr. H.O. Warner was hired as a potato extension specialist by UNL. His first course of action was the creation of the state's first seed potato certification program.

By the early 1920's seed potato certification was turned over to the Foundation Seed Division of the Nebraska Certified Potato Growers Association (NCPGA) (Figure 2). Seed certification was then conducted by NCPGA with UNL oversight. Since NCPGA was created for marketing purposes, many felt a new agency should be established to conduct certification only. In 1952 the Potato Certification Association of Nebraska (PCAN) was incorporated as a non-stock, non-profit association. An Executive Council is elected annually from industry members and all rule changes are approved by the Seed Certification Committee at UNL. PCAN is currently in its sixth decade of operation.



Figure 2. Second Annual Convention of the Nebraska Certified Potato Growers Association.

Field Inspections

Field inspections are important for any certification program because some diseases are more identifiable on the plant than on the tubers. This is the case with many strains of potato virus y (PVY), as well as potato leaf roll virus (PLRV). Furthermore, all lots considered for certification or re-certification by PCAN must be inspected during the plant growth stage (Figure 3).

A minimum of two field inspections are conducted annually by PCAN. First inspections are made in June or July, once plants are capable of exhibiting symptoms. The following two inspections occur later in summer. This allows time for inspectors to identify problems not seen earlier in the season, including varietal mixtures.

Figure 3. Various tolerances for diseases and varietal mixtures during field inspections.

Class		Foundation						<u>Certified</u>
Disease	Generation	FY0	FY1	FY2	FY3	FY4	FY5	0 thru 6
Leaf roll		0	0.1	0.2	0.3	0.4	0.5	1.0
Mosaic		0	0.1	0.2	0.3	0.4	0.5	2.0
Total serious virus		0	0.2	0.4	0.6	0.6	0.6	3.0
Variety Mixture		0	0.1	0.2	0.3	0.4	0.5	0.5
Blight (Early and Late)		–	–	–	–	–	–	–
Visible Black Leg		0	0.5	0.5	0.5	0.5	1.0	3.0
Colombia Root Knot		0	0	0	0	0	0	0
Nematode								
Bacterial Ring Rot		No tolerance allowed in any class or generation of seed						

Shipping Point Inspections

Shipping point inspections in Nebraska are voluntary, fee-for service inspections that have been administered by PCAN since 1952. The objective of this program is to facilitate trade by providing buyers and sellers of seed potatoes impartial and accurate information regarding quality and condition of seed potato shipments. This information is necessary to satisfy the requirements of state and federal marketing orders, or to verify compliance with specifications in a contract. These inspections are usually performed at the same time seed is being graded, but only after passing field inspections.

Scoring to determine grade of these shipments is based on the United States Standards for Grades of Potatoes. The following grades are used by PCAN:

Blue Tag Grade

This grade is considered the same as the U.S. #1 Seed Potato Grade. These consist of unwashed potatoes identified as certified seed by the state of origin by blue tags fixed to the containers or official state or federal-state certificates accompanying bulk loads, which identify the crop year, grower, variety and generation, as well as the state certification agency.

Yellow Tag Grade

These are also unwashed potatoes that have not met Blue Tag tolerances for internal defects and certain diseases yet remain certified according to the Rules and Regulations of PCAN. The tagging procedure for the Yellow Grade is the same as the Blue Grade.

Green Tag Grade

This grade is intended as a buyer/seller agreement with no size or grade restrictions. Visual inspection will be performed for Bacterial Ring Rot only. The seed should not be washed and should be tagged the same way as Blue and Yellow Grade shipments.

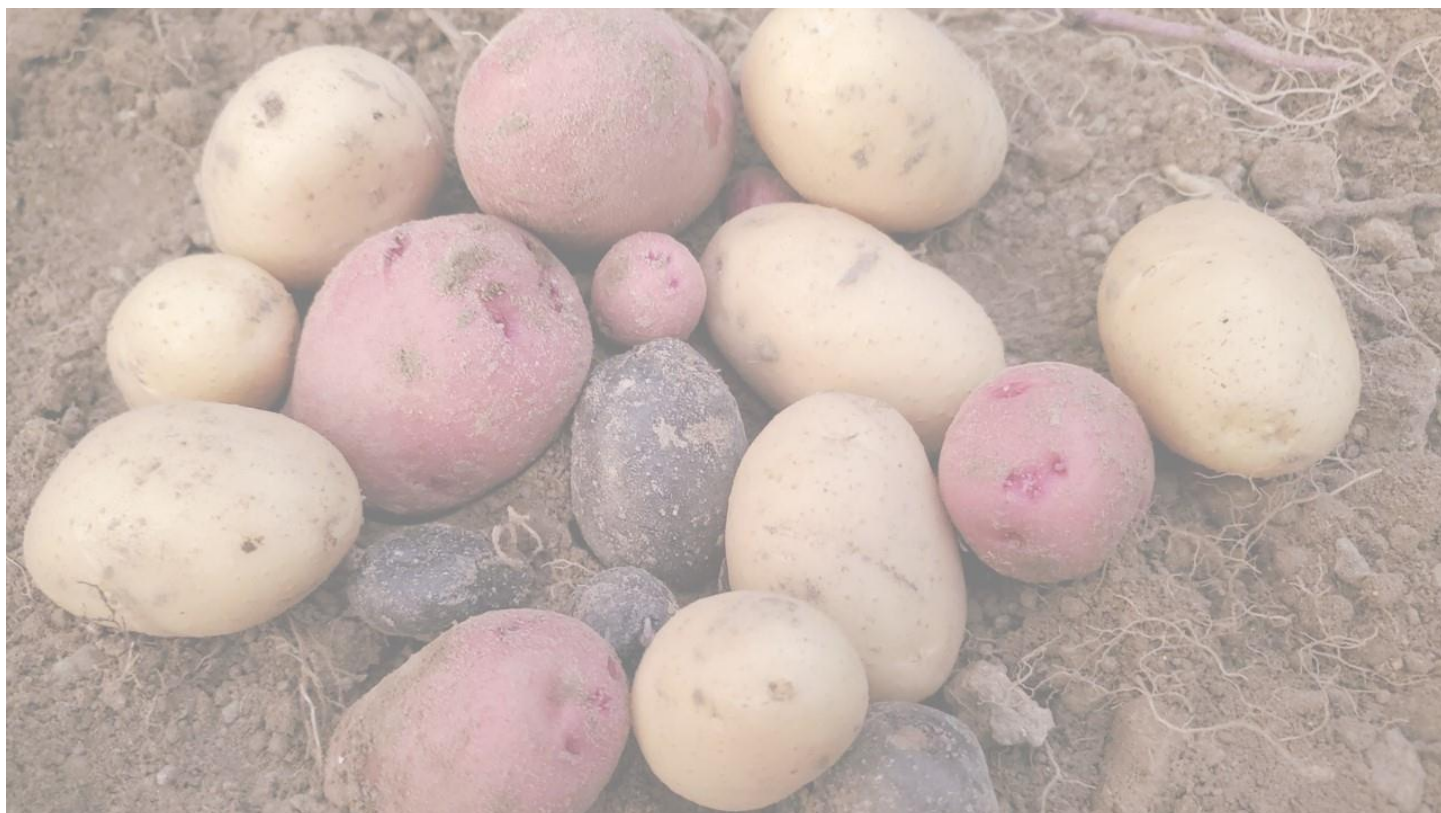


2023 Variety List

<u>Variety</u>	<u>Acres Accepted</u>	<u>Page</u>
907-15	1.18	9
A071012-4BF	0.4	9
ACO3433-1W	0.19	9
AF5071-2	1.32	9
Alturas	61.27	9
Alverstone Russet	41.8	9
Atlantic	260.84	9
Bannock Russet	29.26	10
Blackberry	2.56	10
Cal Red	0.38	10
Caribou Russet	25.44	10
Ciklamen	11.92	10
Clearwater Russet	138.89	10
Columba	1.8	10
COTX08063-2Rus	1.3	10
Dakota Russet	328.02	11
Fenway Red	1.5	11
Gala	10.9	11
Gerona	1.54	11
Giocanda	0.53	11
Hamlin	77.42	11
Huron Chipper	14.75	11
Ivory Russet	14.55	11
King Russet	6.29	12
Lamoka	334.4	12
Laona	0.48	12
Mackinaw	61.82	12
Markies	0.3	12
Mesa Russet	0.08	12
MoDoc	21.28	12
Monroe	0.1	13
Mountain Gem	154.62	13
MSZ416-8RY	0.67	13
MSZ242-13	0.4	13
ORO1233-10	2	13
Paige	3.69	13
Petoskey	3.64	13
Proprietary Varieties	2527.06	13
Prospect	59.63	13
Purple Majesty	2.47	14
Rainer Russet	0.34	14
Ranger Russet	21.4	14
Red LaSoda strain 10	56.16	14
Reveille Russet	266.54	14

2023 Variety List

<u>Variety</u>	<u>Acres Accepted</u>	<u>Page</u>
Ruby Rose	3.56	14
Russet Burbank	247.85	15
Russet Norkotah	35.9	15
Russet Norkotah Colorado strain 3	65.64	15
Russet Norkotah Colorado strain 8	58.79	15
Russet Norkotah TSP	16.44	15
Russet Norkotah Texas strain 112	58.31	16
Russet Norkotah Texas strain 223	84.07	16
Russet Norkotah Texas strain 278	396.11	16
Russet Norkotah Texas strain 296	363.96	17
Shepody	7.2	17
Silverton Russet	76.45	17
Snowden	67.52	17
Umatilla Russet	582.14	18
Upstate Abundance	0.63	18
Vanguard Russet	26.77	18
Vizzelle	0.76	18
W9426-3R/W	2.47	18
W9742-3RUS	10.3	18
Waneta	34.84	18



2023 Summer Field Readings

Variety and Grower	Lot #	First Inspection		Second Inspection		Third Inspection		Acres	Field Year
		Mosaic	Leafroll	Mosaic	Leafroll	Mosaic	Leafroll		
907-15									
CSS Farms Cody	233009	0%	0%	0%	0%	NI	NI	Total Acres 1.18	FY1
A071012-4BF									
CSS Farms Cody	233027	0%	0%	0%	0%	NI	NI	0.1	FY1
CSS Farms Cody	233043	0%	0%	0%	0%	NI	NI	0.3	FY2
								Total Acres 0.4	
ACO 3433-1W									
Western Potatoes INC	232032	0%	0%	0%	0%	NI	NI	0.1	FY1
Western Potatoes INC	232046	0%	0%	0%	0%	NI	NI	0.09	FY2
								Total Acres 0.19	
AF 5071-2									
CSS Farms Cody	233003	0%	0%	0%	0%	NI	NI	0.44	FY1
CSS Farms Cody	233030	0%	0%	0%	0%	NI	NI	0.08	FY1
CSS Farms Cody	233046	0%	0%	0%	0%	NI	NI	0.8	FY2
								Total Acres 1.32	
Alturas									
Whole Seed Farm, LLC	234109	0%	0%	0%	0%	NI	NI	1.67	FY1
Whole Seed Farm, LLC	234110	0%	0%	0%	0%	NI	NI	23.8	FY2
Whole Seed Farm, LLC	234111	0%	0%	0%	0%	NI	NI	35.8	FY3
								Total Acres 61.27	
Alverstone Russet									
CSS Farms Cody	233055	0%	0%	0%	0%	NI	NI	9	FY2
CSS Farms Cody	233069	0%	0%	0%	0%	NI	NI	32.8	FY3
								Total Acres 41.8	
Atlantic									
Clear Horizons Seed Lab	230017	0%	0%	0%	0%	NI	NI	0.1	FY0
Clear Horizons Seed Lab	230019	0%	0%	0%	0%	NI	NI	0.1	FY0
Western Potatoes INC	232006	0%	0%	0%	0%	NI	NI	0.54	FY1
Western Potatoes INC	232021	0%	0%	0%	0%	NI	NI	19	FY3
Western Potatoes INC	232036	0%	0%	0%	0%	NI	NI	7.4	FY2
CSS Farms Cody	233021	0%	0%	0%	0%	NI	NI	0.42	FY1
CSS Farms Cody	233022	0%	0%	0%	0%	NI	NI	3.11	FY1
CSS Farms Cody	233060	0%	0%	0%	0%	NI	NI	11.1	FY2
CSS Farms Cody	233068	0%	0%	0%	0%	NI	NI	92.7	FY3
Thompson Seed Potato, Ptr.	235024	0%	0%	0%	0%	NI	NI	0.82	FY1
Thompson Seed Potato, Ptr.	235040	0%	0%	0%	0%	NI	NI	0.08	FY1
Thompson Seed Potato, Ptr.	235042	0%	0%	0%	0%	NI	NI	0.27	FY1
Thompson Seed Potato, Ptr.	235064	0%	0%	0%	0%	NI	NI	8.07	FY2
Thompson Seed Potato, Ptr.	235065	0%	0%	0%	0%	NI	NI	5.44	FY2
Thompson Seed Potato, Ptr.	235123	0%	0%	0%	0%	NI	NI	66.31	FY3
Thompson Seed Potato, Ptr.	235124	0%	0%	0%	0%	NI	NI	45.38	FY3
								Total Acres 260.84	

*NI = No Inspection Conducted

2023 Summer Field Readings

Variety and Grower	Lot #	First Inspection		Second Inspection		Third Inspection		Acres	Field Year
		Mosaic	Leafroll	Mosaic	Leafroll	Mosaic	Leafroll		
Bannock Russet									
Thompson Seed Potato, Ptr.	235031	0%	0%	0%	0%	NI	NI	0.34	FY1
Thompson Seed Potato, Ptr.	235071	0%	0%	0%	0%	NI	NI	3.95	FY2
Thompson Seed Potato, Ptr.	235072	0%	0%	0%	0%	NI	NI	2.2	FY2
Thompson Seed Potato, Ptr.	235113	0%	0%	0%	0%	NI	NI	4.45	FY3
Thompson Seed Potato, Ptr.	235114	0%	0%	0%	0%	NI	NI	18.32	FY3
Total Acres								29.26	
Blackberry									
CSS Farms Cody	233065	0%	0%	0%	0%	NI	NI	Total Acres 2.56	FY2
Cal Red									
Thompson Seed Potato, Ptr.	235035	0%	0%	0%	0%	NI	NI	Total Acres 0.38	FY1
Caribou Russet									
Clear Horizons Seed Lab	230013	0%	0%	0%	0%	NI	NI	0.1	FY0
CSS Farms North Platte	231010	0%	0%	0%	0%	NI	NI	18.2	FY3
CSS Farms Cody	233035	0%	0%	0%	0%	NI	NI	1.19	FY1
CSS Farms Cody	233053	0%	0%	0%	0%	NI	NI	4.6	FY2
Thompson Seed Potato, Ptr.	235133	0%	0%	0%	0%	0%	0%	0.1	FY1
Thompson Seed Potato, Ptr.	235136	0%	0%	0%	0%	0%	0%	1.25	FY1
Total Acres								25.44	
Ciklamen									
CSS Farms Cody	233039	0%	0%	0%	0%	NI	NI	Total Acres 11.92	FY1
Clearwater Russet									
Clear Horizons Seed Lab	230002	0%	0%	0%	0%	NI	NI	0.1	FY0
Western Potatoes INC	232047	0%	0%	0%	0%	NI	NI	0.22	FY2
Whole Seed Farm, LLC	234101	0%	0%	0%	0%	NI	NI	28.6	FY2
Whole Seed Farm, LLC	234102	0%	0%	0%	0%	NI	NI	4.31	FY1
Thompson Seed Potato, Ptr.	235019	0%	0%	0%	0%	NI	NI	1.15	FY1
Thompson Seed Potato, Ptr.	235038	0%	0%	0%	0%	NI	NI	0.39	FY1
Thompson Seed Potato, Ptr.	235073	0%	0%	0%	0%	NI	NI	1.38	FY2
Thompson Seed Potato, Ptr.	235074	0%	0%	0%	0%	NI	NI	2.48	FY2
Thompson Seed Potato, Ptr.	235075	0%	0%	0%	0%	NI	NI	6.95	FY2
Thompson Seed Potato, Ptr.	235104	0%	0%	0%	0%	NI	NI	13.18	FY3
Thompson Seed Potato, Ptr.	235105	0%	0%	0%	0%	NI	NI	11.44	FY3
Thompson Seed Potato, Ptr.	235107	0%	0%	0%	0%	NI	NI	28.69	FY3
Thompson Seed Potato, Ptr.	235108	0%	0%	0%	0%	NI	NI	40	FY4
Total Acres								138.89	
Columba									
CSS Farms Cody	233011	0%	0%	0%	0%	NI	NI	Total Acres 1.8	FY1
COTX 08063-2Rus									
CSS Farms Cody	233048	0%	0%	0%	0%	NI	NI	Total Acres 1.3	FY2

*NI = No Inspection Conducted

2023 Summer Field Readings

Variety and Grower	Lot #	First Inspection		Second Inspection		Third Inspection		Acres	Field Year
		Mosaic	Leafroll	Mosaic	Leafroll	Mosaic	Leafroll		
Dakota Russet									
Western Potatoes INC	232031	0%	0%	0%	0%	NI	NI	0.27	FY1
CSS Farms Cody	233002	0%	0%	0%	0%	NI	NI	1.2	FY1
CSS Farms Cody	233056	0%	0%	0%	0%	NI	NI	11.8	FY2
Whole Seed Farm, LLC	234106	0%	0%	0%	0%	NI	NI	2.03	FY1
Whole Seed Farm, LLC	234304	0%	0%	0%	0%	NI	NI	20.1	FY2
Whole Seed Farm, LLC	234702	0%	0%	0%	0%	NI	NI	37.6	FY3
Whole Seed Farm, LLC	234801	0%	0%	0%	0%	0%	0%	119.3	FY3
Thompson Seed Potato, Ptr.	235017	0%	0%	0%	0%	NI	NI	1.43	FY1
Thompson Seed Potato, Ptr.	235079	0%	0%	0%	0%	NI	NI	19.59	FY2
Thompson Seed Potato, Ptr.	235091	0%	0%	0%	0%	NI	NI	114.7	FY4
Total Acres								<u>328.02</u>	
Fenway Red									
CSS Farms Cody	233019	0%	0%	0%	0%	NI	NI	Total Acres 1.5	FY1
Gala									
CSS Farms Cody	233020	0%	0%	0%	0%	NI	NI	Total Acres 10.9	FY1
Gerona									
CSS Farms Cody	233005	0%	0%	0%	0%	NI	NI	Total Acres 1.54	FY1
Giocanda									
CSS Farms Cody	233007	0%	0%	0%	0%	NI	NI	Total Acres 0.53	FY1
Hamlin									
CSS Farms North Platte	231007	0%	0%	0%	0%	NI	NI	24.1	FY3
CSS Farms Cody	233036	0%	0%	0%	0%	NI	NI	2.92	FY1
CSS Farms Cody	233057	0%	0%	0%	0%	NI	NI	2	FY2
CSS Farms Cody	233058	0%	0%	0%	0%	NI	NI	11.1	FY2
Whole Seed Farm, LLC	234108	0%	0%	0%	0%	NI	NI	4.2	FY1
Whole Seed Farm, LLC	234302	0%	0%	0%	0%	NI	NI	33.1	FY2
Total Acres								<u>77.42</u>	
Huron Chipper									
CSS Farms Cody	233013	0%	0%	0%	0%	NI	NI	0.37	FY1
CSS Farms Cody	233064	0%	0%	0%	0%	NI	NI	2.86	FY2
Thompson Seed Potato, Ptr.	235101	0%	0%	0%	0%	NI	NI	11.52	FY3
Total Acres								<u>14.75</u>	
Ivory Russet									
CSS Farms Cody	233034	0%	0%	0%	0%	NI	NI	1.25	FY1
CSS Farms Cody	233059	0%	0%	0%	0%	NI	NI	13.3	FY2
Total Acres								<u>14.55</u>	

*NI = No Inspection Conducted

2023 Summer Field Readings

Variety and Grower	Lot #	First Inspection		Second Inspection		Third Inspection		Acres	Field Year
		Mosaic	Leafroll	Mosaic	Leafroll	Mosaic	Leafroll		
King Russet									
CSS Farms Cody	233001	0%	0%	0%	0%	NI	NI	0.39	FY1
CSS Farms Cody	233004	0%	0%	0%	0%	NI	NI	5.9	FY1
Total Acres								6.29	
Lamoka									
Clear Horizons Seed Lab	230022	0%	0%	0%	0%	NI	NI	0.1	FY0
CSS Farms North Platte	231011	0%	0%	0%	0%	NI	NI	117.6	FY3
CSS Farms North Platte	231012	0%	0%	0%	0%	NI	NI	11.4	FY3
Western Potatoes INC	232009	0%	0%	0%	0%	NI	NI	0.85	FY1
Western Potatoes INC	232010	0%	0%	0%	0%	NI	NI	1.06	FY1
Western Potatoes INC	232039	0%	0%	0%	0%	NI	NI	7.7	FY2
Western Potatoes INC	232040	0%	0%	0%	0%	NI	NI	8.8	FY2
Western Potatoes INC	232043	0%	0%	0%	0%	NI	NI	19	FY3
Western Potatoes INC	232058	0%	0%	0%	0%	NI	NI	64	FY4
Western Potatoes INC	232059	0%	0%	0%	0%	NI	NI	56	FY3
Western Potatoes INC	232060	0%	0%	0%	0%	NI	NI	36	FY3
CSS Farms Cody	233024	0%	0%	0%	0%	NI	NI	0.69	FY1
CSS Farms Cody	233025	0%	0%	0%	0%	NI	NI	6.49	FY1
CSS Farms Cody	233061	0%	0%	0%	0%	NI	NI	4.71	FY2
Total Acres								334.4	
Laona									
CSS Farms Cody	233029	0%	0%	0%	0%	NI	NI	0.48	FY1
Mackinaw									
CSS Farms North Platte	231013	0%	0%	0%	0%	NI	NI	45.8	FY3
CSS Farms Cody	233023	0%	0%	0%	0%	NI	NI	2.82	FY1
CSS Farms Cody	233075	0%	0%	0%	0%	NI	NI	13.2	FY2
Total Acres								61.82	
Markies									
CSS Farms Cody	233031	0%	0%	0%	0%	NI	NI	0.15	FY1
CSS Farms Cody	233044	0%	0%	0%	0%	NI	NI	0.15	FY2
Total Acres								0.3	
Mesa Russet									
CSS Farms Cody	233028	0%	0%	0%	0%	NI	NI	0.08	FY1
MoDoc									
Clear Horizons Seed Lab	230014	0%	0%	0%	0%	NI	NI	0.1	FY0
Thompson Seed Potato, Ptr.	235032	0%	0%	0%	0%	NI	NI	0.2	FY1
Thompson Seed Potato, Ptr.	235033	0%	0%	0%	0%	NI	NI	0.8	FY1
Thompson Seed Potato, Ptr.	235100	0%	0%	0%	0%	NI	NI	20.18	FY3
Total Acres								21.28	

*NI = No Inspection Conducted

2023 Summer Field Readings

Variety and Grower	Lot #	First Inspection		Second Inspection		Third Inspection		Acres	Field Year	
		Mosaic	Leafroll	Mosaic	Leafroll	Mosaic	Leafroll			
Monroe										
Clear Horizons Seed Lab	230023	0%	0%	0%	0%	NI	NI	Total Acres	0.1	FY0
Mountain Gem										
Clear Horizons Seed Lab	230006	0%	0%	0%	0%	NI	NI		0.1	FY0
Thompson Seed Potato, Ptr.	235006	0%	0%	0%	0%	NI	NI		1.76	FY1
Thompson Seed Potato, Ptr.	235020	0%	0%	0%	0%	NI	NI		1.11	FY1
Thompson Seed Potato, Ptr.	235081	0%	0%	0%	0%	NI	NI		22.84	FY2
Thompson Seed Potato, Ptr.	235129	0%	0%	0%	0%	NI	NI		4.41	FY3
Thompson Seed Potato, Ptr.	235131	0%	0%	0%	0%	NI	NI		124.4	FY3
								Total Acres	154.62	
MSZ416-8RY										
CSS Farms Cody	233066	0%	0%	0%	0%	NI	NI	Total Acres	0.67	FY2
MSZ242-13										
Western Potatoes, INC	232001	0%	0%	0%	0%	NI	NI	Total Acres	0.4	FY1
OR12133-10										
CSS Farms Cody	233026	0%	0%	0%	0%	NI	NI		0.3	FY1
CSS Farms Cody	233047	0%	0%	0%	0%	NI	NI		1.7	FY2
								Total Acres	2	
Paige										
Western Potatoes INC	232005	0%	0%	0%	0%	NI	NI		0.84	FY1
CSS Farms Cody	233018	0%	0%	0%	0%	NI	NI		2.85	FY1
								Total Acres	3.69	
Petoskey										
Clear Horizons Seed Lab	230020	0%	0%	0%	0%	NI	NI		0.1	FY0
Western Potatoes INC	232002	0%	0%	0%	0%	NI	NI		0.27	FY1
Western Potatoes INC	232003	0%	0%	0%	0%	NI	NI		0.27	FY1
Western Potatoes INC	232049	0%	0%	0%	0%	NI	NI		3	FY2
								Total Acres	3.64	
Proprietary Varieties										
								Total Acres	2527.06	
Prospect										
Clear Horizons Seed Lab	230001	0%	0%	0%	0%	NI	NI		0.1	FY0
Thompson Seed Potato, Ptr.	235076	0%	0%	0%	0%	NI	NI		3.62	FY2
Thompson Seed Potato, Ptr.	235077	0%	0%	0%	0%	NI	NI		9.06	FY2
Thompson Seed Potato, Ptr.	235099	0%	0%	0%	0%	NI	NI		46.31	FY3
Thompson Seed Potato, Ptr.	235137	0%	0%	0%	0%	NI	NI		0.54	FY1
								Total Acres	59.63	

*NI = No Inspection Conducted

2023 Summer Field Readings

Variety and Grower	Lot #	First Inspection		Second Inspection		Third Inspection		Acres	Field Year	
		Mosaic	Leafroll	Mosaic	Leafroll	Mosaic	Leafroll			
Purple Majesty										
CSS Farms Cody	233012	0%	0%	0%	0%	NI	NI	Total Acres	2.47	FY1
Rainer Russet										
Clear Horizons Seed Lab	230012	0%	0%	0%	0%	NI	NI		0.1	FY0
Thompson Seed Potato, Ptr.	235039	0%	0%	0%	0%	NI	NI		0.24	FY1
								Total Acres	0.34	
Ranger Russet										
Whole Seed Farm, LLC	234104	0%	0%	0%	0%	NI	NI		1.89	FY1
Whole Seed Farm, LLC	234303	0%	0%	0%	0%	NI	NI		18.1	FY2
Thompson Seed Potato, Ptr.	235134	0%	0%	0%	0%	0%	0%		1.41	FY1
								Total Acres	21.4	
Red LaSoda strain 10										
Clear Horizons Seed Lab	230016	0%	0%	0%	0%	NI	NI		0.1	FY0
Thompson Seed Potato, Ptr.	235034	0%	0%	0%	0%	NI	NI		0.66	FY1
Thompson Seed Potato, Ptr.	235061	0%	0%	0%	0%	NI	NI		13.54	FY2
Thompson Seed Potato, Ptr.	235097	0%	0%	0%	0%	NI	NI		41.86	FY3
								Total Acres	56.16	
Reveille Russet										
Clear Horizons Seed Lab	230003	0%	0%	0%	0%	NI	NI		0.1	FY0
Whole Seed Farm, LLC	234103	0%	0%	0%	0%	0%	0%		0.07	FY1
Thompson Seed Potato, Ptr.	235004	0%	0%	0%	0%	NI	NI		1.11	FY1
Thompson Seed Potato, Ptr.	235005	0%	0%	0%	0%	NI	NI		1.54	FY1
Thompson Seed Potato, Ptr.	235021	0%	0%	0%	0%	NI	NI		1.04	FY1
Thompson Seed Potato, Ptr.	235041	0%	0%	0%	0%	NI	NI		0.21	FY1
Thompson Seed Potato, Ptr.	235055	0%	0%	0%	0%	NI	NI		20.74	FY2
Thompson Seed Potato, Ptr.	235056	0%	0%	0%	0%	NI	NI		15.98	FY2
Thompson Seed Potato, Ptr.	235057	0%	0%	0%	0%	NI	NI		10.22	FY2
Thompson Seed Potato, Ptr.	235106	0%	0%	0%	0%	NI	NI		88.53	FY3
Thompson Seed Potato, Ptr.	235130	0%	0%	0%	0%	NI	NI		125.7	FY3
Thompson Seed Potato, Ptr.	235135	0%	0%	0%	0%	0%	0%		1.3	FY1
								Total Acres	266.54	
Ruby Rose										
CSS Farms Cody	233063	0%	0%	0%	0%	NI	NI	Total Acres	3.56	FY2

*NI = No Inspection Conducted

2023 Summer Field Readings

Variety and Grower	Lot #	First Inspection		Second Inspection		Third Inspection		Acres	Field Year
		Mosaic	Leafroll	Mosaic	Leafroll	Mosaic	Leafroll		
Russet Burbank									
Clear Horizons Seed Lab	230005	0%	0%	0%	0%	NI	NI	0.1	FY0
Clear Horizons Seed Lab	230009	0%	0%	0%	0%	NI	NI	0.1	FY0
Whole Seed Farm, LLC	234107	0%	0%	0%	0%	NI	NI	8.37	FY1
Whole Seed Farm, LLC	234205	0%	0%	0%	0%	NI	NI	49.9	FY2
Thompson Seed Potato, Ptr.	235022	0%	0%	0%	0%	NI	NI	0.8	FY1
Thompson Seed Potato, Ptr.	235037	0%	0%	0%	0%	NI	NI	0.59	FY1
Thompson Seed Potato, Ptr.	235068	0%	0%	0%	0%	NI	NI	0.5	FY2
Thompson Seed Potato, Ptr.	235070	0%	0%	0%	0%	NI	NI	9.51	FY2
Thompson Seed Potato, Ptr.	235088	0%	0%	0%	0%	NI	NI	6.58	FY2
Thompson Seed Potato, Ptr.	235089	0%	0%	0%	0%	NI	NI	171.4	FY3
Total Acres								<u>247.85</u>	

Russet Norkotah									
Thompson Seed Potato, Ptr.	235023	0%	0%	0%	0%	NI	NI	0.86	FY1
Thompson Seed Potato, Ptr.	235046	0%	0%	0%	0%	NI	NI	0.24	FY1
Thompson Seed Potato, Ptr.	235058	0%	0%	0%	0%	NI	NI	5.62	FY2
Thompson Seed Potato, Ptr.	235059	0%	0%	0%	0%	NI	NI	3.67	FY2
Thompson Seed Potato, Ptr.	235110	0%	0%	0%	0%	NI	NI	12.92	FY3
Thompson Seed Potato, Ptr.	235117	0%	0%	0%	0%	NI	NI	12.59	FY3
Total Acres								<u>35.9</u>	

Russet Norkotah Colorado 3 Strain									
CSS Farms Cody	233054	0%	0%	0%	0%	NI	NI	5	FY2
Thompson Seed Potato, Ptr.	235003	0%	0%	0%	0%	NI	NI	0.71	FY1
Thompson Seed Potato, Ptr.	235028	0%	0%	0%	0%	NI	NI	0.58	FY1
Thompson Seed Potato, Ptr.	235084	0%	0%	0%	0%	NI	NI	2.88	FY2
Thompson Seed Potato, Ptr.	235085	0%	0%	0%	0%	NI	NI	4.03	FY2
Thompson Seed Potato, Ptr.	235127	0%	0%	0%	0%	NI	NI	52.44	FY3
Total Acres								<u>65.64</u>	

Russet Norkotah Colorado 8 Strain									
Thompson Seed Potato, Ptr.	235002	0%	0%	0%	0%	NI	NI	0.48	FY1
Thompson Seed Potato, Ptr.	235027	0%	0%	0%	0%	NI	NI	0.55	FY1
Thompson Seed Potato, Ptr.	235062	0%	0%	0%	0%	NI	NI	6.35	FY2
Thompson Seed Potato, Ptr.	235063	0%	0%	0%	0%	NI	NI	8.19	FY2
Thompson Seed Potato, Ptr.	235111	0%	0%	0%	0%	NI	NI	43.22	FY3
Total Acres								<u>58.79</u>	

Russet Norkotah TSP									
Thompson Seed Potato, Ptr.	235025	0%	0%	0%	0%	NI	NI	0.66	FY1
Thompson Seed Potato, Ptr.	235060	0%	0%	0%	0%	NI	NI	6.78	FY2
Thompson Seed Potato, Ptr.	235116	0%	0%	0%	0%	NI	NI	9	FY3
Total Acres								<u>16.44</u>	

*NI = No Inspection Conducted

2023 Summer Field Readings

Variety and Grower	Lot #	First Inspection		Second Inspection		Third Inspection		Acres	Field Year
		Mosaic	Leafroll	Mosaic	Leafroll	Mosaic	Leafroll		
Russet Norkotah Texas 112 Strain									
Clear Horizons Seed Lab	230007	0%	0%	0%	0%	NI	NI	0.1	FY0
Clear Horizons Seed Lab	230015	0%	0%	0%	0%	NI	NI	0.1	FY0
Thompson Seed Potato, Ptr.	235030	0%	0%	0%	0%	NI	NI	0.49	FY1
Thompson Seed Potato, Ptr.	235036	0%	0%	0%	0%	NI	NI	0.91	FY1
Thompson Seed Potato, Ptr.	235082	0%	0%	0%	0%	NI	NI	5.39	FY2
Thompson Seed Potato, Ptr.	235083	0%	0%	0%	0%	NI	NI	8.12	FY2
Thompson Seed Potato, Ptr.	235115	0%	0%	0%	0%	NI	NI	4.62	FY3
Thompson Seed Potato, Ptr.	235128	0%	0%	0%	0%	NI	NI	38.58	FY3
Total Acres								<u>58.31</u>	

Russet Norkotah Texas 223 Strain									
CSS Farms Cody	233051	0%	0%	0%	0%	NI	NI	4.3	FY2
Thompson Seed Potato, Ptr.	235001	0%	0%	0%	0%	NI	NI	0.32	FY1
Thompson Seed Potato, Ptr.	235018	0%	0%	0%	0%	NI	NI	1.59	FY1
Thompson Seed Potato, Ptr.	235048	0%	0%	0%	0%	NI	NI	2.86	FY2
Thompson Seed Potato, Ptr.	235049	0%	0%	0%	0%	NI	NI	21.52	FY2
Thompson Seed Potato, Ptr.	235126	0%	0%	0%	0%	NI	NI	53.48	FY3
Total Acres								<u>84.07</u>	

Russet Norkotah Texas 278 Strain									
Clear Horizons Seed Lab	230018	0%	0%	0%	0%	NI	NI	0.1	FY0
Clear Horizons Seed Lab	230024	0%	0%	0%	0%	NI	NI	0.1	FY0
CSS Farms North Platte	231001	0%	0%	0%	0%	NI	NI	115.5	FY3
CSS Farms North Platte	231002	0%	0%	0%	0%	NI	NI	57.1	FY3
CSS Farms Cody	233037	0%	0%	0%	0%	NI	NI	8	FY1
Thompson Seed Potato, Ptr.	235007	0%	0%	0%	0%	NI	NI	1.15	FY1
Thompson Seed Potato, Ptr.	235008	0%	0%	0%	0%	NI	NI	1.51	FY1
Thompson Seed Potato, Ptr.	235015	0%	0%	0%	0%	NI	NI	1.87	FY1
Thompson Seed Potato, Ptr.	235050	0%	0%	0%	0%	NI	NI	19	FY2
Thompson Seed Potato, Ptr.	235051	0%	0%	0%	0%	NI	NI	16.99	FY2
Thompson Seed Potato, Ptr.	235052	0%	0%	0%	0%	NI	NI	14.79	FY2
Thompson Seed Potato, Ptr.	235092							160	FY3
Total Acres								<u>396.11</u>	

*NI = No Inspection Conducted

2023 Summer Field Readings

Variety and Grower	Lot #	First Inspection		Second Inspection		Third Inspection		Acres	Field Year
		Mosaic	Leafroll	Mosaic	Leafroll	Mosaic	Leafroll		
Russet Norkotah Texas 296 Strain									
Clear Horizons Seed Lab	230004	0%	0%	0%	0%	NI	NI	0.1	FY0
Clear Horizons Seed Lab	230011	0%	0%	0%	0%	NI	NI	0.1	FY0
CSS Farms North Platte	231003	0%	0%	0%	0%	NI	NI	52	FY3
CSS Farms North Platte	231004	0%	0%	0%	0%	NI	NI	115.8	FY3
CSS Farms North Platte	231005	0%	0%	0%	0%	NI	NI	21.9	FY3
CSS Farms Cody	233038	0%	0%	0%	0%	NI	NI	5.7	FY1
Thompson Seed Potato, Ptr.	235016	0%	0%	0%	0%	NI	NI	1.87	FY1
Thompson Seed Potato, Ptr.	235045	0%	0%	0%	0%	NI	NI	0.39	FY1
Thompson Seed Potato, Ptr.	235053	0%	0%	0%	0%	NI	NI	13.89	FY2
Thompson Seed Potato, Ptr.	235054	0%	0%	0%	0%	NI	NI	15.01	FY2
Thompson Seed Potato, Ptr.	235090	0%	0%	0%	0%	NI	NI	9.2	FY3
Thompson Seed Potato, Ptr.	235093	0%	0%	0%	0%	NI	NI	128	FY3
Total Acres								363.96	
Shepody									
Clear Horizons Seed Lab	230008	0%	0%	0%	0%	NI	NI	0.1	FY0
Clear Horizons Seed Lab	230010	0%	0%	0%	0%	NI	NI	0.1	FY0
CSS Farms Cody	233050	0%	0%	0%	0%	NI	NI	3.5	FY2
Thompson Seed Potato, Ptr.	235132	0%	0%	0%	0%	0%	0%	3.5	FY1
Total Acres								7.2	
Silverton Russet									
CSS Farms North Platte	231009	0%	0%	0%	0%	NI	NI	13	FY3
CSS Farms Cody	233032	0%	0%	0%	0%	NI	NI	0.64	FY1
CSS Farms Cody	233049	0%	0%	0%	0%	NI	NI	2.3	FY2
Thompson Seed Potato, Ptr.	235029	0%	0%	0%	0%	NI	NI	0.49	FY1
Thompson Seed Potato, Ptr.	235086	0%	0%	0%	0%	NI	NI	5.19	FY2
Thompson Seed Potato, Ptr.	235095	0%	0%	0%	0%	NI	NI	29.9	FY3
Thompson Seed Potato, Ptr.	235096	0%	0%	0%	0%	NI	NI	24.93	FY3
Total Acres								76.45	
Snowden									
CSS Farms North Platte	231014	0%	0%	0%	0%	NI	NI	59.3	FY3
CSS Farms Cody	233014	0%	0%	0%	0%	NI	NI	1.72	FY1
CSS Farms Cody	233062	0%	0%	0%	0%	NI	NI	6.5	FY2
Total Acres								67.52	

*NI = No Inspection Conducted

2023 Summer Field Readings

Variety and Grower	Lot #	First Inspection		Second Inspection		Third Inspection		Acres	Field Year
		Mosaic	Leafroll	Mosaic	Leafroll	Mosaic	Leafroll		
Umatilla Russet									
Whole Seed Farm, LLC	234105	0%	0%	0%	0%	NI	NI	4.89	FY1
Whole Seed Farm, LLC	234203	0%	0%	0%	0%	NI	NI	14.2	FY2
Whole Seed Farm, LLC	234204	0%	0%	0%	0%	NI	NI	22	FY2
Whole Seed Farm, LLC	234301	0%	0%	0%	0%	NI	NI	2.4	FY3
Whole Seed Farm, LLC	234305	0%	0%	0%	0%	NI	NI	33.1	FY2
Whole Seed Farm, LLC	234401	0%	0%	0%	0%	NI	NI	95.1	FY3
Whole Seed Farm, LLC	234501	0%	0%	0%	0%	NI	NI	119.1	FY3
Whole Seed Farm, LLC	234601	0%	0%	0%	0%	NI	NI	120.9	FY3
Whole Seed Farm, LLC	234701	0%	0%	0%	0%	NI	NI	81.6	FY3
Thompson Seed Potato, Ptr.	235026	0%	0%	0%	0%	NI	NI	0.68	FY1
Thompson Seed Potato, Ptr.	235087	0%	0%	0%	0%	NI	NI	4.89	FY2
Thompson Seed Potato, Ptr.	235118	0%	0%	0%	0%	NI	NI	40.15	FY3
Thompson Seed Potato, Ptr.	235119	0%	0%	0%	0%	NI	NI	43.13	FY4
Total Acres								582.14	
Upstate Abundance									
CSS Farms Cody	233008	0%	0%	0%	0%	NI	NI	0.63	FY1
Vanguard Russet									
CSS Farms North Platte	231006	0%	0%	0%	0%	NI	NI	21.7	FY3
CSS Farms Cody	233033	0%	0%	0%	0%	NI	NI	0.67	FY1
CSS Farms Cody	233052	0%	0%	0%	0%	NI	NI	4.4	FY2
Total Acres								26.77	
Vizzelle									
CSS Farms Cody	233006	0%	0%	0%	0%	NI	NI	0.76	FY1
W9426-3R/W									
CSS Farms Cody	233010	0%	0%	0%	0%	NI	NI	2.47	FY1
W9742-3RUS									
CSS Farms North Platte	231008	0%	0%	0%	0%	NI	NI	9.5	FY3
CSS Farms Cody	233045	0%	0%	0%	0%	NI	NI	0.8	FY2
Total Acres								10.3	
Waneta									
Clear Horizons Seed Lab	230021	0%	0%	0%	0%	NI	NI	0.1	FY0
Western Potatoes INC	232004	0%	0%	0%	0%	NI	NI	0.94	FY1
Western Potatoes INC	232020	0%	0%	0%	0%	NI	NI	8.8	FY3
Western Potatoes INC	232041	0%	0%	0%	0%	NI	NI	15.3	FY2
Western Potatoes INC	232045	0%	0%	0%	0%	NI	NI	9.7	FY3
Total Acres								34.84	

*NI = No Inspection Conducted

Field Planting/Nomenclature Table

Field Planting Equivalency Table ₁ YEAR IN THE FIELD _{2,3}								
Agency	1	2	3	4	5	6	7	8
Alaska	G1	G2	G3	G4	G5	G6	G7	G8
California	G1	G2	G3	G4	G5	----	----	----
Colorado	G1	G2	G3	G4	G5	G6	----	----
Idaho ⁵	FY1	FY2	FY3	FY4	FY5	FY6	FY7	----
Maine ⁵	FY1	FY2	FY3	FY4	FY5	----	----	----
Michigan ⁵	FY1	FY2	FY3	FY4	FY5	FY6	----	----
Minnesota	G1	G2	G3	G4	G5	G6	C	----
Montana	N	G1	G2	G3	G4	G5	----	----
Nebraska/Wyoming ⁵	FY1	FY2	FY3	FY4	FY5	FY6	----	----
Nevada	N	G1	G2	G3	G4	G5	----	----
New York ⁴	(U)G1	(U)G2	(U)G3	G4	G5	G6	----	----
North Dakota ⁵	FY1	FY2	FY3	FY4	FY5	FY6	C	----
Oregon ⁵	FY1	FY2	FY3	FY4	FY5	FY6	----	----
Utah	N(G1)	G2	G3	G4	G5	G6	----	----
Washington	N	G1	G2	G3	G4	G5	----	----
Wisconsin ⁶	FY1	FY2	FY3	FY4	FY5	FY6	C	----
Canada	PE	E1	E2	E3	E4	F	C	----

¹The purpose of this table is to express equivalency of terms used by various certification agencies for seed potatoes harvested from a series of successive field plantings. For specific criteria relating to disease tolerances and other requirements, the reader is referred to the certification regulations of the agency in question.

²The first field planting utilizes laboratory-tested stocks which may be tissue-cultured plantlets, greenhouse-produced minitubers, stem cuttings, or line selections. Contact agencies for details as to types of stocks planted in their programs.

³Terms used by agency for seed potatoes for a particular year in the field: C = certified, E = elite, F = foundation, G = generation, N = nuclear, PE = pre-elite.

⁴If lots originate at Cornell-Uihlein Farm, the first three generations (G1-G3) are also designated by a (U) to denote source.

⁵FY = Field Year

⁶FY = Foundation Year

Notice to Buyers

This seed book is not an exhaustive list of all requirements for certification for Nebraska Seed Potatoes. All potential buyers of Nebraska Seed Potatoes should refer to the Rules and Regulations of the Potato Certification Association of Nebraska. The Rules and Regulations of the Potato Certification Association of Nebraska contain all testing and inspection requirements for Nebraska Seed Potatoes. Disease tolerances are also contained within these Rules and Regulations. These Rules and Regulations can be found at the official website of the Potato Certification Association of Nebraska: www.nebraskapotatoes.com.

It is industry standard to reference the North American Plant Health Certificate for each lot contained within this Seed Book. The North American Plant Health Certificates provide a summary of summer field inspections, BRR testing, and winter test results for each lot.



2023 GROWER DIRECTORY

CLEAR HORIZONS SEED LAB

Chase Engel
50668 Hwy 71
Scottsbluff, NE 69361
Email: chase_engel@hotmail.com
Phone: 308-760-3380

CSS FARMS

Adam Naslund-Cody Farm Manager
35550 Boiling Springs Road
Cody, NE 69211
Phone (Office): 402-823-4041
Email: adam.naslund@cssfarms.com
Fax: 402-823-4061

CSS FARMS, LLC

Josh McBride - North Platte, Farm
Manager
3605 West Watts Road
North Platte, NE 69101
Email: josh.mcbride@cssfarms.com
Phone: 402-389-2161

THOMPSON SEED POTATOES

Dan Thompson
Joe Thompson
Phone: 308-760-6553
Email: jthompson@bbc.net
6541 Jefferson Road Alliance NE
69301

COUNTRYWIDE POTATO, LLC

Lisa Hickman
Phone: 308-762-7699
Email: lisa.hickman@ymail.com
Toll Free: 1-800-922-7699
6541 Jefferson Road Alliance NE
69301

WESTERN POTATOES, INC

Troy Sorensen
P.O. Box 755/189 Brayton Road
Troy: 308-760-9365
Office: 308-762-4917
Fax: 308-762-7656
Email: westernpotatoesinc@gmail.com

WHOLE SEED FARM

Jon Gilley
701-212-8633
Email: jgilley@rdoffutt.com
48002 879th Road Atkinson, NE
68713

Notes

A series of horizontal lines for writing notes, consisting of 20 parallel lines spaced evenly down the page.