

# Table of Contents

	<u>Page</u>
Table of Contents	1
Introduction	2
Potato Certification Association of Nebraska Staff, Executive Council, and Advisory Committee	3
History of the Potato Certification Association of Nebraska	4
Information Regarding Field, Bin and Shipping Point Inspections	5
Variety List	7
2021 Nebraska Seed Potato List	9
Field Planting/Nomenclature Table	19
Notice to Buyers	20
2021 Nebraska Seed Potato Directory	21
Notes	22

# INTRODUCTION TO THE 2021 SEED POTATO BOOK

This is the official Nebraska Seed Potato Directory of the Potato Certification Association of Nebraska (PCAN) for the 2021 crop year. The Potato Certification Association of Nebraska (PCAN) is a not-for-profit organization and official designated agency of the University of Nebraska-Lincoln. The lots listed in this directory are those that have passed both summer field inspections. The following are required for a lot to be considered certified within the state of Nebraska:

- Originate from planting stocks that were grown in a sterile environment and underwent proper disease testing.
- Pass both summer field inspections. The potato seed stocks on this list represent all seed fields which have passed field inspections and are within the tolerance for diseases and mixtures.
- Pass a bin inspection conducted a minimum of 60 days following harvest, with an emphasis on identifying bacterial ring rot.
- Pass a post-harvest test. PCAN conducts post-harvest tests in one of three ways:
  - A grow out. Samples are grown out in a warm location sometime between November and January and are visually inspected for the presence of PVY, PLRV or other diseases. ELISA tests are conducted on these lots for PVY or PLRV at the request of the grower. If no laboratory test is conducted as part of the grow out, this will be indicated on the North American Plant Health Certificate with an NT (no-test) designation.
  - In a greenhouse. Samples are planted in a greenhouse close to the PCAN office, and not offsite at a warm location. Visual inspections and laboratory testing are conducted the exact same way as in a traditional grow out.
  - Sprout testing. Samples are allowed to sprout, and ELISA tests are conducted on the sprouts. This is the preferred method for varieties with long dormancy.
- Eligible seed lots shall be sampled for a winter test and be approved before replanting as certified seed potatoes in Nebraska.
- Pass a Federal-State shipping point inspection.
- Adhere to all the requirements with the Rules and Regulations of the Potato Certification Association of Nebraska. These Rules and Regulations can be found at the official website of the Potato Certification Association of Nebraska: <http://nebraskapotatoes.com>.
- Nebraska certified seed potatoes may be sorted for sale in one of three grades (Blue, Yellow, Green). See **Shipping Point Inspections** for a more detailed description of these grades.

# Potato Certification Association of Nebraska staff, Executive Council and Advisory Committee

## Purpose

The Potato Certification Association of Nebraska (PCAN) is a non-profit, non-stock corporation which conducts inspection and certification of potatoes, when authorized by the College of Agriculture of the University of Nebraska in pursuant to sections 81-2, 149 to 81-2, 154 (Reissue Revised Statutes of Nebraska 1943). The agency was designed to encourage the production of potatoes and other crops for seed purposes in the states of Nebraska and Wyoming.

## How We Are Structured

In 1931 the Vice Chancellor of the Institute of Agriculture and Natural Resources at the University of Nebraska, under State Law, House Roll 67, designated PCAN as a potato certification agency. Under the law of Nebraska, PCAN was incorporated on June 4, 1951. The Vice Chancellor (with an Advisory Committee), specifies the Standards for Certification, and approves rules and procedures used by the certifying agency. The Advisory Committee is composed of the department heads of Agronomy and Horticulture, Entomology, and Plant Pathology with the Associate Dean of Agriculture Research serving as chairperson.

The Executive Council of PCAN is responsible for financing and administering the regulations and for establishing proper conduct of potato seed certification in the states of Nebraska and Wyoming. The Executive Council consists of four active members who are elected at the Association’s Annual meeting. The manager of PCAN also sits on the Executive Council and serves as the Council’s secretary. A full-time staff, consisting of a Manager and Assistant Manager, is overseen by the Executive Council to conduct day-to-day operations for the agency. These duties include, but are not limited to: field inspections, bin inspections, shipping point inspections, laboratory activities, post-harvest winter tests, representing the agency at professional meetings and promoting Nebraska-raised seed potatoes. The manager and assistant manager of PCAN also provide leadership and assistance to seasonal and part time staff. The structure of Nebraska Potato Certification is detailed in Figure 1.

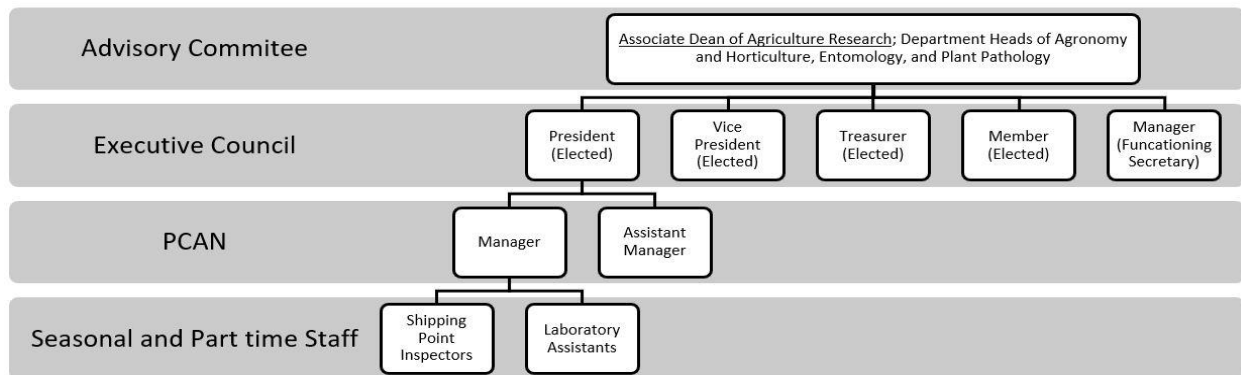


Figure 1. Nebraska Potato Certification structure

## Potato Certification Association of Nebraska Administrative Bodies

### Members of the Executive Council

Lisa Hickman – President; Alliance, Nebraska  
 Josh McBride – Vice President; North Platte, Nebraska  
 Jon Gilley – Treasurer; Atkinson, Nebraska  
 Chase Engel – Member; Scottsbluff, Nebraska  
 Chris Toetdle – Member; Alliance, Nebraska  
 Adam Winchester – Secretary/Manager; Gering, Nebraska

### Seed Advisory Committee

Dr. Mike Boehm - Vice Chancellor  
 Dr. Hector Santiago – Chairman  
 Dr. Loren Giesler – Plant Pathology  
 Dr. Gary Brewer – Entomology  
 Dr. Richard Ferguson – Agronomy and Horticulture

## Current Staff of the Potato Certification Association of Nebraska

Adam Winchester.....Manager

### Bin and Shipping Point Inspectors:

Terry Weisgerber, Adrian Gonzalez, Gary Leever, John Wickman, Brandon Roland, Kay Koupe, Christopher Wright, Rex Kaup, Ivan Gomez, Orlando Reza, Elijah Harris

### Summer Field Inspectors:

Gary Leever, Michael Kaus, Daniel Anderson, Adrian Gonzalez

### Laboratory Assistants:

Michael Kaus, Jennifer Dillinger, Terry Weisgerber, Adrian Gonzalez

## History of the Potato Certification Association of Nebraska

Nebraska began seed potato certification in Nebraska in 1918, through the University of Nebraska-Lincoln (UNL). Nebraska growers at that time were facing many issues with the deterioration of seed in field and storage. In order to combat this Dr. H.O. Warner was hired as a potato extension specialist by UNL. His first course of action was the creation of the state's first seed potato certification program.

By the early 1920's seed potato certification was turned over to the Foundation Seed Division of the Nebraska Certified Potato Growers Association (NCPGA) (Figure 2). Seed certification was then conducted by NCPGA with UNL oversight. Since NCPGA was created for marketing purposes, many felt a new agency should be established to conduct certification only. In 1952 the Potato Certification Association of Nebraska (PCAN) was incorporated as a non-stock, non-profit association. An Executive Council is elected annually from industry members and all rule changes are approved by the Seed Certification Committee at UNL. PCAN is currently in its sixth decade of operation.



Figure 2. Second Annual Convention of the Nebraska Certified Potato Growers Association.

## Field Inspections

Field inspections are important for any certification program because some diseases are more identifiable on the plant than on the tubers. This is the case with many strains of potato virus y (PVY), as well as potato leaf roll virus (PLRV). Furthermore, all lots considered for certification or re-certification by PCAN must be inspected during the plant growth stage (Figure 3).

Three field inspections are conducted annually by PCAN. First inspections are made in June, or once plants are capable of exhibiting symptoms. The following two inspections occur later in summer. This allows time for inspectors to identify problems not seen earlier in the season, including varietal mixtures.

**Figure 3. Various tolerances for diseases and varietal mixtures during field inspections.**

Class		Foundation						<u>Certified</u>
Disease	Generation	FY0	FY1	FY2	FY3	FY4	FY5	0 thru 6
Leaf roll		0	0.1	0.2	0.3	0.4	0.5	1.0
Mosaic		0	0.1	0.2	0.3	0.4	0.5	2.0
Total serious virus		0	0.2	0.4	0.6	0.6	0.6	3.0
Variety Mixture		0	0.1	0.2	0.3	0.4	0.5	0.5
Blights (Early and Late)		–	–	–	–	–	–	–
Visible Black Leg		0	0.5	0.5	0.5	0.5	1.0	3.0
Colombia Root Knot Nematode		0	0	0	0	0	0	0
Bacterial Ring Rot	No tolerance allowed in any class or generation of seed							

## **Bin Inspections**

PCAN personnel perform storage inspections between harvest and shipping. The purpose of these inspections is to assess the storability, health, and quality of seed during the storage season. Additionally, these inspections aid PCAN personnel and growers in identifying potential issues before the shipping season is underway, allowing growers to make informed decisions concerning their seed. In most cases bin inspections are conducted on samples delivered to the PCAN office.

### **Bin Inspection Requirements**

- Bins need to be approved by PCAN in advance of their use.
- Potatoes eligible for storage inspection and tagging as certified potatoes cannot be stored, graded, or handled in storages containing unidentified potatoes (which were not field inspected for certification), or lots rejected for the presence of Bacterial Ring Rot.
- Separation of seed lots should be easily identifiable.
- A written notification shall be filled with the PCAN office if certified seed stocks are moved in bulk from one storage to another.

## **Shipping Point Inspections**

Shipping point inspections in Nebraska are voluntary, fee-for service inspections that have been administered by PCAN since 1952. The objective of this program is to facilitate trade by providing buyers and sellers of seed potatoes impartial and accurate information regarding quality and condition of seed potato shipments. This information is necessary to satisfy the requirements of state and federal marketing orders, or to verify compliance with specifications in a contract. These inspections are usually performed at the same time seed is being graded, but only after passing both field and storage inspections.

Scoring to determine grade of these shipments is based on the United States Standards for Grades of Potatoes. The following grades are used by PCAN:

### **Blue Tag Grade**

This grade is considered the same as the U.S. #1 Seed Potato Grade. These consist of unwashed potatoes identified as certified seed by the state of origin by blue tags fixed to the containers or official state or federal-state certificates accompanying bulk loads, which identify the crop year, grower, variety and generation, as well as the state certification agency.

### **Yellow Tag Grade**

These are also unwashed potatoes that have not met Blue Tag tolerances for internal defects and certain diseases yet remain certified according to the Rules and Regulations of PCAN. The tagging procedure for the Yellow Grade is the same as the Blue Grade.

### **Green Tag Grade**

This grade is intended as a buyer/seller agreement with no size or grade restrictions. Visual inspection will be performed for Bacterial Ring Rot only. The seed should not be washed and should be tagged the same way as Blue and Yellow Grade shipments.

## 2021 Variety List

<u>Variety</u>	<u>Acres Accepted</u>	<u>Page</u>
907-15	2.29	9
Alpine Russet	52.43	9
Alturas	18.2	9
Alverstone Russet	4.89	9
Atlantic	215.71	9
Bannock Russet	18.8	9
Blackberry	0.5	9
Caribou Russet	30.67	10
Ciklamen	16.5	10
Clearwater Russet	78.28	10
Colorado Rose	0.49	10
Dakota Russet	59.42	10
Excellency	0.2	10
Gala	14.39	10
Gerona	3.07	10
Hamlin	16.71	11
Hodag	6.71	11
Huron Chipper	11.39	11
Ivory Russet	23.61	11
Ivory Russet strain 2482	16.4	11
Kingsman	0.54	11
KO-141846R	0.108	11
KO-152487P	0.108	11
KO-153228	0.98	11
Lady Liberty	14.9	11
Lady Terra	2.65	12
Lamoka	211.54	12
Leonata	0.23	12
Mackinaw	61.15	12
Megachip	0.1	12
Mesa Russet	0.25	12
Monica Russet	21.33	12
Mountain Gem	153.12	12
Nicolet	26.1	13
Noblesse	0.21	13
Petoskey	0.1	13
Proprietary Varieties	3,183.01	13
Prospect	157.62	13
Purple Majesty	7.91	13
Radiant Ruby	0.27	13
Ranger Russet	10.2	13
Red LaSoda strain 10	58.47	13
Reveille Russet	148.57	14
Rock	11.53	14
Russet Burbank	235.19	14
Russet Burbank 1445	1.14	14
Russet Norkotah	43.61	14
Russet Norkotah Colorado strain 3	37.26	15
Russet Norkotah Colorado strain 8	61.77	15

## 2021 Variety List

<u>Variety</u>	<u>Acres Accepted</u>	<u>Page</u>
Russet Norkotah Texas strain 112	38.6	15
Russet Norkotah Texas strain 223	91	16
Russet Norkotah Texas strain 278	430.02	15
Russet Norkotah Texas strain 296	347.96	16
Russet Norkotah Nebraska LT strain	1.59	16
Russet Norkotah Thompson strain	1.93	16
Shepody	17.82	16
Silverton Russet	116.22	16
Snowden	137.26	17
Sunset Russet	0.7	17
Texas Rose (Ruby Rose)	1.95	17
Umatilla Russet	474.29	17
Upstate Abundance	3.99	17
Vanguard Russet	27.37	17
Vizzelle	33.26	17
W9426-3R/W	2	17
W9433-1rus	14.51	18
W9742-3rus	0.41	18
Waneta	15.6	18



## 2021 Summer Field Readings

Variety and Grower	Lot #	First Inspection		Second Inspection		Third Inspection		Acres	Field Year
		Mosaic	Leafroll	Mosaic	Leafroll	Mosaic	Leafroll		
<b>907-15</b>									
CSS Farms, Cody	213021	0%	0%	0%	0%	NI	NI*	1.6	FY2
CSS Farms, Cody	213094	0%	0%	0%	0%	NI	NI	0.69	FY1
<b>Total Acres</b>								<u>2.29</u>	
<b>Alpine Russet</b>									
CSS Farms, Cody	213075	0%	0%	0%	0%	NI	NI	1.03	FY1
Whole Seed Farm	214302	0%	0%	0%	0%	0%	0%	51.4	FY4
<b>Total Acres</b>								<u>52.43</u>	
<b>Alturas</b>									
Whole Seed Farm	214105	0%	0%	0%	0%	NI	NI	9.76	FY2
Whole Seed Farm	214114	0%	0%	0%	0%	NI	NI	4.48	FY1
Whole Seed Farm	214116	0%	0%	0%	0%	0%	0%	3.96	FY2
<b>Total Acres</b>								<u>18.2</u>	
<b>Alverstone Russet</b>									
CSS Farms, Cody	213009	0%	0%	0%	0%	NI	NI	2.7	FY2
CSS Farms, Cody	213010	0%	0%	0%	0%	NI	NI	1	FY3
CSS Farms, Cody	213076	0%	0%	0%	0%	NI	NI	1.19	FY1
<b>Total Acres</b>								<u>4.89</u>	
<b>Atlantic</b>									
Clear Horizons Seed Lab	210012	0%	0%	0%	0%	NI	NI	0.1	FY0
Clear Horizons Seed Lab	210015	0%	0%	0%	0%	NI	NI	0.1	FY0
CSS Farms, North Platte	211010	0%	0%	0%	0%	NI	NI	46.5	FY3
Western Potatoes, Inc.	212040	0%	0%	0%	0%	NI	NI	40.3	FY3
Western Potatoes, Inc.	212049	0%	0%	0%	0%	NI	NI	6.5	FY2
Western Potatoes, Inc.	212070	0%	0%	0%	0%	NI	NI	0.85	FY1
CSS Farms, Cody	213028	0%	0%	0%	0%	NI	NI	12	FY2
CSS Farms, Cody	213088	0%	0%	0%	0%	NI	NI	1.6	FY1
Thompson Seed Potatoes,	215075	0%	0%	0%	0%	TR	0%	85.45	FY4
Thompson Seed Potatoes,	215041	0%	0%	0%	0%	NI	NI	7.77	FY2
Thompson Seed Potatoes,	215042	0%	0%	0%	0%	NI	NI	13.9	FY3
Thompson Seed Potatoes,	215123	0%	0%	0%	0%	NI	NI	0.64	FY1
<b>Total Acres</b>								<u>215.71</u>	
<b>Bannock Russet</b>									
Clear Horizons Seed Lab	210010	0%	0%	0%	0%	NI	NI	0.1	FY0
Thompson Seed Potato, Ptr.	215056	0%	0%	0%	0%	NI	NI	10.04	FY3
Thompson Seed Potato, Ptr.	215057	0%	0%	0%	0%	NI	NI	4.02	FY3
Thompson Seed Potato, Ptr.	215017	0%	0%	0%	0%	NI	NI	1.12	FY2
Thompson Seed Potato, Ptr.	215018	0%	0%	0%	0%	NI	NI	2.51	FY2
Thompson Seed Potato, Ptr.	215089	0%	0%	0%	0%	NI	NI	0.48	FY1
Thompson Seed Potato, Ptr.	215107	0%	0%	0%	0%	NI	NI	0.53	FY1
<b>Total Acres</b>								<u>18.8</u>	
<b>Blackberry</b>									
CSS Farms, Cody	213098	0%	0%	0%	0%	NI	NI	0.55	FY1

\*NI = No Inspection Conducted

## 2021 Summer Field Readings

Variety and Grower	Lot #	First Inspection		Second Inspection		Third Inspection		Acres	Field Year
		Mosaic	Leafroll	Mosaic	Leafroll	Mosaic	Leafroll		
<b>Caribou Russet</b>									
CSS Farms, North Platte	211004	0%	0%	0%	0%	NI	NI*	14.9	FY3
CSS Farms, North Platte	211017	0%	0%	0%	0%	NI	NI	14.5	FY2
CSS Farms, Cody	213074	0%	0%	0%	0%	NI	NI	1.27	FY1
<b>Total Acres</b>								<u>30.67</u>	
<b>Ciklamen</b>									
CSS Farms, Cody	213086	0%	0%	0%	0%	NI	NI	<b>Total Acres</b> 16.5	FY1
<b>Clearwater Russet</b>									
Clear Horizons Seed Lab	210006	0%	0%	0%	0%	0%	0%	0.1	FY0
Clear Horizons Seed Lab	210009	0%	0%	0%	0%	NI	NI	0.1	FY0
CSS Farms, Cody	213078	0%	0%	0%	0%	NI	NI	1.85	FY1
Whole Seed Farm	214103	0%	0%	0%	0%	NI	NI	16.01	FY2
Whole Seed Farm	214104	0%	0%	0%	0%	NI	NI	12.2	FY2
Whole Seed Farm	214111	0%	0%	0%	0%	NI	NI	4.69	FY1
Whole Seed Farm	214303	0%	0%	0%	0%	0%	0%	33.8	FY3
Thompson Seed Potato, Ptr.	215015	0%	0%	0%	0%	NI	NI	4.52	FY2
Thompson Seed Potato, Ptr.	215016	0%	0%	0%	0%	NI	NI	3.48	FY2
Thompson Seed Potato, Ptr.	215108	0%	0%	0%	0%	NI	NI	0.41	FY1
Thompson Seed Potato, Ptr.	215112	0%	0%	0%	0%	NI	NI	1.12	FY1
<b>Total Acres</b>								<u>78.28</u>	
<b>Colorado Rose</b>									
CSS Farms, Cody	213096	0%	0%	0%	0%	NI	NI	<b>Total Acres</b> 0.49	FY1
<b>Dakota Russet</b>									
CSS Farms, North Platte	211003	0%	0%	0%	0%	NI	NI	13.7	FY3
CSS Farms, Cody	213007	0%	0%	0%	0%	NI	NI	1.3	FY2
CSS Farms, Cody	213070	0%	0%	0%	0%	NI	NI	1.14	FY1
Whole Seed Farm	214101	0%	0%	0%	0%	NI	NI	5.1	FY2
Whole Seed Farm	214109	0%	0%	0%	0%	NI	NI	1.88	FY1
Whole Seed Farm	214306	0%	0%	0%	0%	0%	0%	3.3	FY2
Whole Seed Farm	214401	0%	0%	0%	0%	0%	0%	33	FY3
<b>Total Acres</b>								<u>59.42</u>	
<b>Excellency</b>									
CSS Farms, Cody	213057	0%	0%	0%	0%	NI	NI	<b>Total Acres</b> 0.2	FY1
<b>Gala</b>									
CSS Farms, Cody	213048	0%	0%	0%	0%	NI	NI	<b>Total Acres</b> 14.39	FY1
<b>Gerona</b>									
CSS Farms, Cody	213020	0%	0%	0%	0%	NI	NI	2.5	FY2
CSS Farms, Cody	213092	0%	0%	0%	0%	NI	NI	0.57	FY1
<b>Total Acres</b>								<u>3.07</u>	

\*NI = No Inspection Conducted

## 2021 Summer Field Readings

Variety and Grower	Lot #	First Inspection		Second Inspection		Third Inspection		Acres	Field Year
		Mosaic	Leafroll	Mosaic	Leafroll	Mosaic	Leafroll		
<b>Hamlin</b>									
CSS Farms, Cody	213001	0%	0%	0%	0%	NI	NI*	14.7	FY3
CSS Farms, Cody	213061	0%	0%	0%	0%	NI	NI	0.91	FY1
Whole Seed Farm	214113	0%	0%	0%	0%	NI	NI	1.1	FY1
<b>Total Acres</b>								16.71	
<b>Hodag</b>									
CSS Farms, Cody	213029	0%	0%	0%	0%	NI	NI	6	FY2
CSS Farms, Cody	213090	0%	0%	0%	0%	NI	NI	0.71	FY1
<b>Total Acres</b>								6.71	
<b>Huron Chipper</b>									
Western Potatoes, Inc.	212037	0%	0%	0%	0%	NI	NI	2.5	FY3
CSS Farms, Cody	213003	0%	0%	0%	0%	NI	NI	8.5	FY2
CSS Farms, Cody	213099	0%	0%	0%	0%	NI	NI	0.39	FY1
<b>Total Acres</b>								11.39	
<b>Ivory Russet</b>									
CSS Farms, Cody	213072	0%	0%	0%	0%	NI	NI	1.01	FY1
Whole Seed Farm	214102	0%	0%	0%	0%	NI	NI	17.68	FY2
Whole Seed Farm	214110	0%	0%	0%	0%	NI	NI	4.92	FY1
<b>Total Acres</b>								23.61	
<b>Ivory Russet strain 2482</b>									
CSS Farms, North Platte	211005	0%	0%	0%	0%	NI	NI	12	FY3
CSS Farms, North Platte	211015	0%	0%	0%	0%	NI	NI	3.7	FY2
CSS Farms, Cody	213071	0%	0%	0%	0%	NI	NI	0.7	FY1
<b>Total Acres</b>								16.4	
<b>Kingsman</b>									
CSS Farms, Cody	213101	0%	0%	0%	0%	NI	NI	0.54	FY1
<b>KO-141846R</b>									
CSS Farms, Cody	213024	0%	0%	0%	0%	NI	NI	0.108	FY2
<b>KO-152487P</b>									
CSS Farms, Cody	213023	0%	0%	0%	0%	NI	NI	0.108	FY2
<b>KO-153228</b>									
CSS Farms, Cody	213025	0%	0%	0%	0%	NI	NI	0.98	FY2
<b>Lady Liberty</b>									
Clear Horizons Seed Lab	210013	0%	0%	0%	0%	NI	NI	0.1	FY0
Western Potatoes, Inc.	212038	0%	0%	0%	0%	NI	NI	1	FY2
Western Potatoes, Inc.	212041	0%	0%	0%	0%	NI	NI	2.8	FY3
Western Potatoes, Inc.	212057	0%	0%	0%	0%	NI	NI	0.44	FY1
Western Potatoes, Inc.	212058	0%	0%	0%	0%	NI	NI	0.45	FY1
CSS Farms, Cody	213002	0%	0%	0%	0%	NI	NI	9.8	FY2
CSS Farms, Cody	213095	0%	0%	0%	0%	NI	NI	0.31	FY1
<b>Total Acres</b>								14.9	

## 2021 Summer Field Readings

Variety and Grower	Lot #	First Inspection		Second Inspection		Third Inspection		Acres	Field Year
		Mosaic	Leafroll	Mosaic	Leafroll	Mosaic	Leafroll		
<b>Lady Terra</b>									
CSS Farms, Cody	213041	0%	0%	0%	0%	NI	NI*	1.04	FY3
CSS Farms, Cody	213042	0%	0%	0%	0%	NI	NI	1	FY2
CSS Farms, Cody	213067	0%	0%	0%	0%	NI	NI	0.61	FY1
<b>Total Acres</b>								2.65	
<b>Lamoka</b>									
Clear Horizons Seed Lab	210014	0%	0%	0%	0%	NI	NI	0.1	FY0
Western Potatoes, Inc.	212053	0%	0%	0%	0%	NI	NI	9.7	FY2
Western Potatoes, Inc.	212054	0%	0%	0%	0%	NI	NI	5.7	FY2
Western Potatoes, Inc.	212068	0%	0%	0%	0%	NI	NI	1	FY1
Western Potatoes, Inc.	212069	0%	0%	0%	0%	NI	NI	0.6	FY1
CSS Farms, Cody	213026	0%	0%	0%	0%	NI	NI	37.3	FY2
CSS Farms, Cody	213040	0%	0%	0%	0%	NI	NI	33	FY3
CSS Farms, Cody	213043	0%	0%	0%	0%	NI	NI	116.6	FY3
CSS Farms, Cody	213055	0%	0%	0%	0%	NI	NI	7.1	FY1
CSS Farms, Cody	213082	0%	0%	0%	0%	NI	NI	0.44	FY1
<b>Total Acres</b>								211.54	
<b>Leonata</b>									
CSS Farms, Cody	213059	0%	0%	0%	0%	NI	NI	0.23	FY1
<b>Mackinaw</b>									
CSS Farms, North Platte	211011	0%	0%	0%	0%	NI	NI	40	FY3
Western Potatoes, Inc.	212039	0%	0%	0%	0%	NI	NI	7.2	FY3
CSS Farms, Cody	213056	0%	0%	0%	0%	NI	NI	11.8	FY2
CSS Farms, Cody	213084	0%	0%	0%	0%	NI	NI	2.15	FY1
<b>Total Acres</b>								61.15	
<b>Megachip</b>									
Clear Horizons Seed Lab	210017	0%	0%	0%	0%	NI	NI	0.1	FY0
<b>Mesa Russet</b>									
CSS Farms, Cody	213064	0%	0%	0%	0%	NI	NI	0.25	FY1
<b>Monica Russet</b>									
CSS Farms, North Platte	211006	0%	0%	0%	0%	NI	NI	9.7	FY3
CSS Farms, North Platte	211016	0%	0%	0%	0%	NI	NI	10.7	FY2
CSS Farms, Cody	213073	0%	0%	0%	0%	NI	NI	0.93	FY1
<b>Total Acres</b>								21.33	
<b>Mountain Gem</b>									
Clear Horizons Seed Lab	210001	0%	0%	0%	0%	0%	0%	0.1	FY0
Thompson Seed Potato, Ptr.	215067	0%	0%	TR	0%	NI	NI	109.2	FY4
Thompson Seed Potato, Ptr.	215068	0%	0%	0%	0%	NI	NI	34.47	FY3
Thompson Seed Potato, Ptr.	215046	0%	0%	0%	0%	NI	NI	8.26	FY2
Thompson Seed Potato, Ptr.	215100	0%	0%	0%	0%	NI	NI	1.09	FY1
<b>Total Acres</b>								153.12	

## 2021 Summer Field Readings

Variety and Grower	Lot #	First Inspection		Second Inspection		Third Inspection		Total Acres	Acres	Field Year
		Mosaic	Leafroll	Mosaic	Leafroll	Mosaic	Leafroll			
<b>Nicolet</b>										
CSS Farms, North Platte	211009	0%	0%	0%	0%	NI	NI*		26.1	FY3
<b>Noblesse</b>										
CSS Farms, Cody	213058	0%	0%	0%	0%	NI	NI		0.21	FY1
<b>Petoskey</b>										
Clear Horizons Seed Lab	210016	0%	0%	0%	0%	NI	NI		0.1	FY0
<b>Proprietary Varieties</b>								<b>Total Acres</b>	3,183.01	
<b>Prospect</b>										
Clear Horizons Seed Lab	210002	0%	0%	0%	0%	0%	0%		0.1	FY0
Whole Seed Farm	214112	0%	0%	0%	0%	NI	NI		1.89	FY1
Whole Seed Farm	214301	0%	0%	0%	0%	0%	0%		0.87	FY2
Thompson Seed Potato, Ptr.	215078	0%	0%	0%	0%	NI	NI		115.75	FY4
Thompson Seed Potato, Ptr.	215076	0.1%	0%	0%	0%	0%	0%		19.77	FY4
Thompson Seed Potato, Ptr.	215058	0.155%	0%	TR	0%	NI	NI		14.63	FY3
Thompson Seed Potato, Ptr.	215022	0%	0%	0%	0%	NI	NI		3.22	FY2
Thompson Seed Potato, Ptr.	215086	0%	0%	0%	0%	NI	NI		0.22	FY1
Thompson Seed Potato, Ptr.	215094	0%	0%	0%	0%	NI	NI		0.73	FY1
Thompson Seed Potato, Ptr.	215095	0%	0%	0%	0%	NI	NI		0.44	FY1
								<b>Total Acres</b>	157.62	
<b>Purple Majesty</b>										
CSS Farms, Cody	213014	0%	0%	0%	0%	NI	NI		7	FY2
CSS Farms, Cody	213091	0%	0%	0%	0%	NI	NI		0.91	FY1
								<b>Total Acres</b>	7.91	
<b>Radiant Ruby</b>										
CSS Farms, Cody	213100	0%	0%	0%	0%	NI	NI		0.27	FY1
<b>Ranger Russet</b>										
Whole Seed Farm	214305	0%	0%	0%	0%	0%	0%		10.2	FY2
<b>Red LaSoda strain 10</b>										
Clear Horizons Seed Lab	210018	0%	0%	0%	0%	NI	NI		0.1	FY0
Thompson Seed Potato, Ptr.	215060	0%	0%	0%	0%	NI	NI		30.12	FY3
Thompson Seed Potato, Ptr.	215059	0%	0%	0%	0%	NI	NI		17.15	FY4
Thompson Seed Potato, Ptr.	215052	0%	0%	0%	0%	NI	NI		7.28	FY4
Thompson Seed Potato, Ptr.	215026	0%	0%	0%	0%	NI	NI		3.51	FY2
Thompson Seed Potato, Ptr.	215090	0%	0%	0%	0%	NI	NI		0.31	FY1
								<b>Total Acres</b>	58.47	

## 2021 Summer Field Readings

Variety and Grower	Lot #	First Inspection		Second Inspection		Third Inspection		Acres	Field Year
		Mosaic	Leafroll	Mosaic	Leafroll	Mosaic	Leafroll		
<b>Reveille Russet</b>									
Clear Horizons Seed Lab	210004	0%	0%	0%	0%	0%	0%	0.1	FY0
CSS Farms, Cody	213069	0%	0%	0%	0%	NI	NI*	0.82	FY1
Thompson Seed Potato, Ptr.	215047	0%	0%	0%	0%	NI	NI	5.27	FY2
Thompson Seed Potato, Ptr.	215048	0%	0%	0%	0%	NI	NI	3.64	FY2
Thompson Seed Potato, Ptr.	215023	0%	0%	0%	0%	NI	NI	4.13	FY2
Thompson Seed Potato, Ptr.	215024	0%	0%	0%	0%	NI	NI	6.4	FY2
Thompson Seed Potato, Ptr.	215096	0%	0%	0%	0%	NI	NI	1.27	FY1
Thompson Seed Potato, Ptr.	215097	0%	0%	0%	0%	NI	NI	0.89	FY1
Thompson Seed Potato, Ptr.	215124	0%	0%	0%	0%	NI	NI	1.19	FY1
Thompson Seed Potato, Ptr.	215073	TR	0%	0.156%	0%	0.4%	0%	104.6	FY3
Thompson Seed Potato, Ptr.	215130	TR	0%	0.1%	0%	0.4%	0%	20.26	FY3
<b>Total Acres</b>								148.57	
<b>Rock</b>									
CSS Farms, Cody	213012	0%	0%	0%	0%	NI	NI	8.8	FY3
CSS Farms, Cody	213013	0%	0%	0%	0%	NI	NI	2.2	FY2
CSS Farms, Cody	213066	0%	0%	0%	0%	NI	NI	0.53	FY1
<b>Total Acres</b>								11.53	
<b>Russet Burbank</b>									
Clear Horizons Seed Lab	210007	0%	0%	0%	0%	0%	0%	0.1	FY0
CSS Farms, Cody	213079	0%	0%	0%	0%	NI	NI	1	FY1
Whole Seed Farm	214106	0%	0%	0%	0%	NI	NI	9.58	FY1
Whole Seed Farm	214107	0%	0%	0%	0%	NI	NI	0.06	FY1
Whole Seed Farm	214203	0%	0%	0%	0%	NI	NI	13.87	FY2
Whole Seed Farm	214204	0%	0%	0%	0%	0%	0%	79.7	FY2
Thompson Seed Potato, Ptr.	215034	0%	0%	0%	0%	NI	NI	11.09	FY2
Thompson Seed Potato, Ptr.	215033	0%	0%	0%	0%	NI	NI	0.93	FY2
Thompson Seed Potato, Ptr.	215032	0%	0%	0%	0%	NI	NI	2.22	FY2
Thompson Seed Potato, Ptr.	215031	0%	0%	0%	0%	NI	NI	113.84	FY3
Thompson Seed Potato, Ptr.	215093	0%	0%	0%	0%	NI	NI	0.45	FY1
Thompson Seed Potato, Ptr.	215120	0%	0%	0%	0%	NI	NI	2.35	FY1
<b>Total Acres</b>								235.19	
<b>Russet Burbank Idaho Strain 1445</b>									
CSS Farms, Cody	213080	0%	0%	0%	0%	NI	NI	1.14	FY1
<b>Russet Norkotah</b>									
Clear Horizons Seed Lab	210005	0%	0%	0%	0%	0%	0%	0.1	FY0
Thompson Seed Potato, Ptr.	215084	0%	0%	0%	0%	NI	NI	38.69	FY3
Thompson Seed Potato, Ptr.	215014	0%	0%	0%	0%	NI	NI	3.88	FY2
Thompson Seed Potato, Ptr.	215087	0%	0%	0%	0%	NI	NI	0.7	FY1
Thompson Seed Potato, Ptr.	215106	0%	0%	0%	0%	NI	NI	0.24	FY1
<b>Total Acres</b>								43.61	

## 2021 Summer Field Readings

Variety and Grower	Lot #	First Inspection		Second Inspection		Third Inspection		Acres	Field Year
		Mosaic	Leafroll	Mosaic	Leafroll	Mosaic	Leafroll		
<b>Russet Norkotah Colorado 8 Strain</b>									
Thompson Seed Potato, Ptr.	215054	0%	0%	0%	0%	NI	NI*	38.02	FY3
Thompson Seed Potato, Ptr.	215050	0%	0%	0%	0%	NI	NI	12.23	FY3
Thompson Seed Potato, Ptr.	215010	0%	0%	0%	0%	NI	NI	3.68	FY2
Thompson Seed Potato, Ptr.	215011	0%	0%	0%	0%	NI	NI	5.36	FY2
Thompson Seed Potato, Ptr.	215101	0%	0%	0%	0%	NI	NI	0.7	FY1
Thompson Seed Potato, Ptr.	215125	0%	0%	0%	0%	NI	NI	1.78	FY1
<b>Total Acres</b>								<u>61.77</u>	
<b>Russet Norkotah Colorado 3 Strain</b>									
CSS Farms, Cody	213065	0%	0%	0%	0%	NI	NI	0.57	FY1
Thompson Seed Potato, Ptr.	215051	0%	0%	0%	0%	NI	NI	30.05	FY3
Thompson Seed Potato, Ptr.	215012	0%	0%	0%	0%	NI	NI	1.82	FY2
Thompson Seed Potato, Ptr.	215013	0%	0%	0%	0%	NI	NI	2.73	FY2
Thompson Seed Potato, Ptr.	215102	0%	0%	0%	0%	NI	NI	0.51	FY1
Thompson Seed Potato, Ptr.	215126	0%	0%	0%	0%	NI	NI	1.58	FY1
<b>Total Acres</b>								<u>37.26</u>	
<b>Russet Norkotah Texas 112 Strain</b>									
Clear Horizons Seed Lab	210003	0%	0%	0%	0%	0%	0%	0.1	FY0
CSS Farms, Cody	213006	0%	0%	0%	0%	NI	NI	2.4	FY2
Thompson Seed Potato, Ptr.	215082	0%	0%	0%	0%	NI	NI	26.7	FY3
Thompson Seed Potato, Ptr.	215001	0%	0%	0%	0%	NI	NI	2.72	FY2
Thompson Seed Potato, Ptr.	215002	0%	0%	0%	0%	NI	NI	5.11	FY2
Thompson Seed Potato, Ptr.	215104	0%	0%	0%	0%	NI	NI	0.41	FY1
Thompson Seed Potato, Ptr.	215114	0%	0%	0%	0%	NI	NI	1.16	FY1
<b>Total Acres</b>								<u>38.6</u>	
<b>Russet Norkotah Texas 278 Strain</b>									
Clear Horizons Seed Lab	210011	0%	0%	0%	0%	NI	NI	0.1	FY0
CSS Farms, North Platte	211002	0%	0%	0%	0%	0%	0%	122.3	FY3
CSS Farms, North Platte	211014	0%	0%	0%	0%	NI	NI	66	FY3
CSS Farms, North Platte	211019	0%	0%	0%	0%	NI	NI	21.4	FY2
CSS Farms, Cody	213085	0%	0%	0%	0%	NI	NI	5.43	FY1
Thompson Seed Potato, Ptr.	215049	TR	0%	TR	0%	NI	NI	65	FY4
Thompson Seed Potato, Ptr.	215035	0%	0%	0%	0%	NI	NI	109.55	FY3
Thompson Seed Potato, Ptr.	215004	0%	0%	0%	0%	NI	NI	7.71	FY2
Thompson Seed Potato, Ptr.	215005	0%	0%	0%	0%	NI	NI	8.09	FY2
Thompson Seed Potato, Ptr.	215006	0%	0%	0%	0%	NI	NI	19.04	FY2
Thompson Seed Potato, Ptr.	215091	0%	0%	0%	0%	NI	NI	0.97	FY1
Thompson Seed Potato, Ptr.	215092	0%	0%	0%	0%	NI	NI	1.23	FY1
Thompson Seed Potato, Ptr.	215118	0%	0%	0%	0%	NI	NI	2.71	FY1
Thompson Seed Potato, Ptr.	215128	0%	0%	0%	0%	NI	NI	0.41	FY1
Thompson Seed Potato, Ptr.	215129	0%	0%	0%	0%	NI	NI	0.08	FY1
<b>Total Acres</b>								<u>430.02</u>	

## 2021 Summer Field Readings

Variety and Grower	Lot #	First Inspection		Second Inspection		Third Inspection		Acres	Field Year
		Mosaic	Leafroll	Mosaic	Leafroll	Mosaic	Leafroll		
<b>Russet Norkotah Texas 223 Strain</b>									
Thompson Seed Potato, Ptr.	215083	0%	0%	0%	0%	NI	NI*	26.66	FY3
Thompson Seed Potato, Ptr.	215079	0%	0%	0%	0%	NI	NI	8.66	FY3
Thompson Seed Potato, Ptr.	215037	0%	0%	0%	0%	NI	NI	50.36	FY3
Thompson Seed Potato, Ptr.	215003	0%	0%	0%	0%	NI	NI	3.33	FY2
Thompson Seed Potato, Ptr.	215105	0%	0%	0%	0%	NI	NI	0.36	FY1
Thompson Seed Potato, Ptr.	215122	0%	0%	0%	0%	NI	NI	1.63	FY1
<b>Total Acres</b>								91	
<b>Russet Norkotah Texas 296 Strain</b>									
Clear Horizons Seed Lab	210008	0%	0%	0%	0%	NI	NI	0.1	FY0
CSS Farms, North Platte	211001	0%	0%	0%	0%	NI	NI	120.5	FY3
CSS Farms, North Platte	211008	0%	0%	0%	0%	NI	NI	27.4	FY3
CSS Farms, North Platte	211018	0%	0%	0%	0%	NI	NI	23.7	FY2
CSS Farms, Cody	213081	0%	0%	0%	0%	NI	NI	5.07	FY1
Thompson Seed Potato, Ptr.	215038	0%	0%	0%	0%	NI	NI	124	FY3
Thompson Seed Potato, Ptr.	215036	0%	0%	0%	0%	NI	NI	15.14	FY3
Thompson Seed Potato, Ptr.	215007	0%	0%	0%	0%	NI	NI	17.83	FY2
Thompson Seed Potato, Ptr.	215008	0%	0%	0%	0%	NI	NI	6.94	FY2
Thompson Seed Potato, Ptr.	215009	0%	0%	0%	0%	NI	NI	5.93	FY2
Thompson Seed Potato, Ptr.	215098	0%	0%	0%	0%	NI	NI	0.85	FY1
Thompson Seed Potato, Ptr.	215099	0%	0%	0%	0%	NI	NI	0.5	FY1
Thompson Seed Potato, Ptr.	215116	0%	0%	0%	0%	NI	NI	3.18	FY1
<b>Total Acres</b>								347.96	
<b>Russet Norkotah Nebraska LT</b>									
Thompson Seed Potato, Ptr.	215025	0%	0%	0%	0%	NI	NI	0.33	FY2
Thompson Seed Potato, Ptr.	215085	0%	0%	0%	0%	NI	NI	1.26	FY2
<b>Total Acres</b>								1.59	
<b>Russet Norkotah Thompson Strain</b>									
Thompson Seed Potato, Ptr.	215110	0%	0%	0%	0%	NI	NI	1.93	FY1
<b>Shepody</b>									
CSS Farms, Cody	213102	0%	0%	0%	0%	NI	NI	0.47	FY1
Thompson Seed Potato, Ptr.	215055	0%	0%	0%	0%	NI	NI	17.35	FY3
<b>Total Acres</b>								17.82	
<b>Silverton Russet</b>									
CSS Farms, North Platte	211007	0%	0%	0%	0%	NI	NI	40.2	FY3
CSS Farms, Cody	213004	0%	0%	0%	0%	NI	NI	6.1	FY2
CSS Farms, Cody	213077	0%	0%	0%	0%	NI	NI	1.07	FY1
Thompson Seed Potato, Ptr.	215064	0%	0%	0.5%	0%	NI	NI	44.57	FY3
Thompson Seed Potato, Ptr.	215065	0%	0%	0%	0%	NI	NI	18.71	FY3
Thompson Seed Potato, Ptr.	215020	0%	0%	0%	0%	NI	NI	2.1	FY2
Thompson Seed Potato, Ptr.	215021	0%	0%	0%	0%	NI	NI	2.41	FY2
Thompson Seed Potato, Ptr.	215103	0%	0%	0%	0%	NI	NI	0.51	FY1
Thompson Seed Potato, Ptr.	215127	0%	0%	0%	0%	NI	NI	0.55	FY1
<b>Total Acres</b>								116.22	



## 2021 Summer Field Readings

Variety and Grower	Lot #	First Inspection		Second Inspection		Third Inspection		Acres	Field Year
		Mosaic	Leafroll	Mosaic	Leafroll	Mosaic	Leafroll		
<b>Snowden</b>									
CSS Farms, Cody	213027	0%	0%	0%	0%	NI	NI*	21.1	FY2
CSS Farms, Cody	213039	0%	0%	0%	0%	NI	NI	25.7	FY3
CSS Farms, Cody	213045	0%	0%	0%	0%	NI	NI	87.4	FY3
CSS Farms, Cody	213087	0%	0%	0%	0%	NI	NI	3.06	FY1
<b>Total Acres</b>								137.26	
<b>Sunset Russet</b>									
CSS Farms, Cody	213011	0%	0%	0%	0%	NI	NI	<b>Total Acres</b> 0.7	FY3
<b>Texas Rose (Ruby Rose)</b>									
CSS Farms, Cody	213060	0%	0%	0%	0%	NI	NI	<b>Total Acres</b> 1.95	FY1
<b>Umatilla Russet</b>									
Whole Seed Farm	214108	0%	0%	0%	0%	NI	NI	4.85	FY1
Whole Seed Farm	214115	0%	0%	0%	0%	NI	NI	13.32	FY1
Whole Seed Farm	214201	0%	0%	0%	0%	0%	0%	17.65	FY2
Whole Seed Farm	214202	0%	0%	0%	0%	0%	0%	27.53	FY2
Whole Seed Farm	214304	0%	0%	0%	0%	0%	0%	13.8	FY3
Whole Seed Farm	214402	0%	0%	0%	0%	0%	0%	92.85	FY3
Whole Seed Farm	214501	0%	0%	0%	0%	0%	0%	117.5	FY3
Whole Seed Farm	214601	0%	0%	0%	0%	0%	0%	120	FY3
Thompson Seed Potato, Ptr.	215069	0%	0%	TR	0%	NI	NI	31.1	FY3
Thompson Seed Potato, Ptr.	215070	0%	0%	TR	0%	NI	NI	31.92	FY3
Thompson Seed Potato, Ptr.	215019	0%	0%	0%	0%	NI	NI	3.15	FY2
Thompson Seed Potato, Ptr.	215088	0%	0%	0%	0%	NI	NI	0.62	FY1
<b>Total Acres</b>								474.29	
<b>Upstate Abundance</b>									
CSS Farms, Cody	213019	0%	0%	0%	0%	NI	NI	2.7	FY2
CSS Farms, Cody	213097	0%	0%	0%	0%	NI	NI	1.29	FY1
<b>Total Acres</b>								3.99	
<b>Vanguard Russet</b>									
CSS Farms, North Platte	211013	0%	0%	0%	0%	NI	NI	23.2	FY3
CSS Farms, Cody	213005	0%	0%	0%	0%	NI	NI	3.6	FY2
CSS Farms, Cody	213068	0%	0%	0%	0%	NI	NI	0.57	FY1
<b>Total Acres</b>								27.37	
<b>Vizzelle</b>									
CSS Farms, Cody	213047	0%	0%	0%	0%	NI	NI	<b>Total Acres</b> 33.26	FY1
<b>W9426-3R/W</b>									
CSS Farms, Cody	213022	0%	0%	0%	0%	NI	NI	1	FY2
CSS Farms, Cody	213093	0%	0%	0%	0%	NI	NI	1	FY1
<b>Total Acres</b>								2	

\*NI = No Inspection Conducted

## 2021 Summer Field Readings

Variety and Grower	Lot #	First Inspection		Second Inspection		Third Inspection		Acres	Field Year
		Mosaic	Leafroll	Mosaic	Leafroll	Mosaic	Leafroll		
<b>W9433-1rus</b>									
CSS Farms, North Platte	211012	0%	0%	0%	0%	NI	NI*	12.1	FY3
CSS Farms, Cody	213008	0%	0%	0%	0%	NI	NI	2.2	FY2
CSS Farms, Cody	213062	0%	0%	0%	0%	NI	NI	0.21	FY1
<b>Total Acres</b>								14.51	
<b>W9742-3rus</b>									
CSS Farms, Cody	213063	0%	0%	0%	0%	NI	NI	<b>Total Acres</b> 0.41	FY1
<b>Waneta</b>									
Wesern Potatoes, Inc.	212055	0%	0%	0%	0%	NI	NI	8.1	FY2
Wesern Potatoes, Inc.	212063	0%	0%	0%	0%	NI	NI	2.5	FY1
CSS Farms, Cody	213030	0%	0%	0%	0%	NI	NI	4.1	FY2
CSS Farms, Cody	213089	0%	0%	0%	0%	NI	NI	0.9	FY1
<b>Total Acres</b>								15.6	

## Field Planting/Nomenclature Table

Field Planting Equivalency Table <sub>1</sub> YEAR IN THE FIELD <sub>2,3</sub>								
Agency	1	2	3	4	5	6	7	8
Alaska	G1	G2	G3	G4	G5	G6	G7	G8
California	G1	G2	G3	G4	G5	----	----	----
Colorado	G1	G2	G3	G4	G5	G6	----	----
Idaho <sup>5</sup>	FY1	FY2	FY3	FY4	FY5	FY6	FY7	----
Maine <sup>5</sup>	FY1	FY2	FY3	FY4	FY5	----	----	----
Michigan <sup>5</sup>	FY1	FY2	FY3	FY4	FY5	FY6	----	----
Minnesota	G1	G2	G3	G4	G5	G6	C	----
Montana	N	G1	G2	G3	G4	G5	----	----
Nebraska/Wyoming <sup>5</sup>	FY1	FY2	FY3	FY4	FY5	FY6	----	----
Nevada	N	G1	G2	G3	G4	G5	----	----
New York <sup>4</sup>	(U)G1	(U)G2	(U)G3	G4	G5	G6	----	----
North Dakota <sup>5</sup>	FY1	FY2	FY3	FY4	FY5	FY6	C	----
Oregon <sup>5</sup>	FY1	FY2	FY3	FY4	FY5	FY6	----	----
Utah	N(G1)	G2	G3	G4	G5	G6	----	----
Washington	N	G1	G2	G3	G4	G5	----	----
Wisconsin <sup>6</sup>	FY1	FY2	FY3	FY4	FY5	FY6	C	----
Canada	PE	E1	E2	E3	E4	F	C	----

<sup>1</sup>The purpose of this table is to express equivalency of terms used by various certification agencies for seed potatoes harvested from a series of successive field plantings. For specific criteria relating to disease tolerances and other requirements, the reader is referred to the certification regulations of the agency in question.

<sup>2</sup>The first field planting utilizes laboratory-tested stocks which may be tissue-cultured plantlets, greenhouse-produced minitubers, stem cuttings, or line selections. Contact agencies for details as to types of stocks planted in their programs.

<sup>3</sup>Terms used by agency for seed potatoes for a particular year in the field: C = certified, E = elite, F = foundation, G = generation, N = nuclear, PE = pre-elite.

<sup>4</sup>If lots originate at Cornell-Uihlein Farm, the first three generations (G1-G3) are also designated by a (U) to denote source.

<sup>5</sup>FY = Field Year

<sup>6</sup>FY = Foundation Year

## **Notice to Buyers**

This seed book is not an exhaustive list of all requirements for certification for Nebraska Seed Potatoes. All potential buyers of Nebraska Seed Potatoes should refer to the Rules and Regulations of the Potato Certification Association of Nebraska. The Rules and Regulations of the Potato Certification Association of Nebraska contain all testing and inspection requirements for Nebraska Seed Potatoes. Disease tolerances are also contained within these Rules and Regulations. These Rules and Regulations can be found at the official website of the Potato Certification Association of Nebraska: <http://nebraskapotatoes.com>.

It is industry standard to reference the North American Plant Health Certificate for each lot contained within this Seed Book. The North American Plant Health Certificates provide a summary of summer field inspections, BRR testing, winter test results, winter lot inspection results for each lot.

# 2021 GROWER DIRECTORY

## CLEAR HORIZONS SEED LAB

Chase Engel  
50668 Hwy 71  
Scottsbluff, NE 69361  
Email: chase\_engel@hotmail.com  
Phone: 308-760-3380

## CSS FARMS

Adam Naslund-Cody Farm Manager  
35550 Boiling Springs Road  
Cody, NE 69211  
Phone (Office): 402-823-4041  
Email: adam.naslund@cssfarms.com  
Fax: 402-823-4061

## CSS FARMS, LLC

Josh McBride - North Platte, Farm  
North Platte Address  
Email: josh.mcbride@cssfarms.com  
Phone: 402-389-2161

## THOMPSON SEED POTATOES

Dan Thompson  
Joe Thompson  
Phone: 308-760-6553  
Email: jthompson@bbc.net  
6541 Jefferson Road Alliance NE  
69301

## COUNTRYWIDE POTATO, LLC

Lisa Hickman  
Phone: 308-762-7699  
Email: lisa.hickman@ymail.com  
Toll Free: 1-800-922-7699  
6541 Jefferson Road Alliance NE  
69301

## WESTERN POTATOES, INC

Troy Sorensen  
Frank Favela  
P.O. Box 755/189 Brayton Road  
Frank: 308-760-5643  
Troy: 308-760-9365  
Office: 308-762-4917  
Fax: 308-762-7656  
Email: westernpotatoesinc@gmail.com

## Whole Seed Farm

Jon Gilley  
701-212-8633  
Email: jgilley@rdoffutt.com  
48002 879th Road Atkinson, NE  
68713

