

# Crop Border Areas Require Intensive Vole Management with



- Rozol paraffinized pellets are ideal for wet conditions
- Apply bait to pivot corners before stacking bales
- Broadcast apply to border areas and buffer strips adjacent to crops



**EFFECTIVE VOLE CONTROL**

Learn More



Meadow vole.

Not labeled for broadcast in CO, FL, NY or VT.  
Do not apply directly to food or feed crops except as specified on the label.

**LIPHATECH**  
888-331-7900 • www.liphatech.com

## Reduce Vole Damage to Crops



UP TO  
**\$500**

# ROZOL Border-Use Offer

Vole Bait\* – End-users only

UP TO  
**\$500**

Redeem by mail - see reverse

Per 50 lb. bag

**\$5<sup>00</sup>** | **\$6<sup>25</sup>**  
(1-39 bags) | (40-80 bags)

\* Restricted-Use Pesticide: Purchase and use requires a valid state certified applicator's license.

Purpose: This rebate is for cumulative trial purchases by end-users only; not for redemption by resellers.

It is a violation of Federal law to use this product in a manner inconsistent with its labeling. Follow all applicable directions, restrictions and precautions on the label.

Reproductions NOT accepted.



**\$500 max value:**

For up to 80 bags  
400 border acres @ 10#/acre

For redemption questions, please call – Ph: (800) 351-1476 x7237

Limit one coupon per user/address, per 12 month period.

Valid for purchases: Oct. 1st, 2018 – May 10th, 2019.  
Must be postmarked by May 31st, 2019.

Please allow 4-6 weeks for processing.

This rebate may not be used in combination with any other offer.

**LIPHATECH**

8021-14 BU  
DM/TS '18

# Vole Damage Cuts Yield & Water Efficiency

R E S T R I C T E D   U S E   P E S T I C I D E

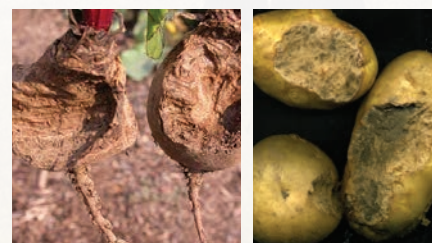
“Voles feed on the stems, leaves and roots of **alfalfa** all year. This constant feeding will often kill the alfalfa plants leaving large brown patches of dead vegetation.”

Glenn Shewmaker, Ph.D.  
Extension Forage Specialist  
University of Idaho

“In **potatoes and sugar beets**...extensive runways are difficult to observe because they are covered by a dense canopy of leaves...you may spot plants that are wilted or collapsed from feeding on the roots and tubers. Voles will hollow out portions of roots and tubers, which reduces yield, quality and can enable diseases to infect the plants.”

“**Cereal grains**, primarily barley, oats, and wheat are often seriously damaged by vole feeding on the young seedlings and cutting the stems leading to stand and yield loss.”

Don W. Morishita, Ph.D.  
Superintendent, Prof. of Weed Science & Extension Specialist  
University of Idaho - Kimberly Research and Extension Center



Vole damage to potatoes & sugar beets.



is an anticoagulant rodenticide made with chlorophacinone (0.005%) that controls Voles with these key benefits:

- Paraffinized pellet holds up to irrigation and can be used in wet or snowy soil conditions.
- Effective control saves labor, application time and money.
- For broadcast use or use in bait stations\*

\* on border areas and buffer strips adjacent to crops.

For retail sale to, and use only by: Certified Applicators, or persons under their direct supervision and only for those uses covered by the Certified Applicator's Certification.



Bait stations are an effective baiting tool on border areas / buffer strips

Is this your first time using Rozol Vole Bait? (y/n) \_\_\_\_\_

Have you used other vole control products (list)? \_\_\_\_\_

What were the results with these products? What were the results with Rozol? \_\_\_\_\_

How and when do you monitor for vole pressure? \_\_\_\_\_

What months do you border broadcast Rozol? \_\_\_\_\_

Do you use T-pipe bait stations to bait and monitor? (y/n) \_\_\_\_\_

How many applications do you make (Check all that apply):  
 Twice in Fall    Winter/Spring    Once in Fall Only   Idaho growers: Do you apply aerially? (y/n) \_\_\_\_\_

Tell us (in 25 words or less) what motivated you to try Rozol? \_\_\_\_\_

NAME: \_\_\_\_\_

ADDRESS: \_\_\_\_\_

CITY: \_\_\_\_\_ STATE: \_\_\_\_\_ ZIP: \_\_\_\_\_

PHONE: \_\_\_\_\_ EMAIL: \_\_\_\_\_

PARTICIPANT SIGNATURE\* \_\_\_\_\_

## \$ROZOL Border-Use Offer\$

Vole Bait – End-users only

### Instructions:

**All questions must be answered in order to receive payment.**

**Mail completed coupon along with dated purchase receipt(s) to:**

**Liphatech - Rozol Vole Bait Rebate**  
**3600 W. Elm Street**  
**Milwaukee, WI 53209**

\*Authorizing Liphatech to contact you regarding the possible use of your comments in printed promotional materials. Your name will NOT be used or SOLD for any other purpose.

## PRECAUTIONARY STATEMENTS

### Hazard to Humans and Domestic Animals

#### CAUTION:

Harmful if swallowed, absorbed through the skin, or if inhaled. Avoid contact with eyes, skin or clothing. Avoid breathing dust. Keep away from children, domestic animals and pets. All handlers (including applicators) must wear long-sleeved shirt, long pants, shoes, socks, and waterproof gloves. Any person who retrieves carcasses or unused bait following application of this product must wear waterproof gloves.

**USER SAFETY REQUIREMENTS:** Follow manufacturer's instructions for cleaning/maintaining washables. If no such instructions for washables, use detergent and hot water. Remove clothing immediately after handling this product. Wash the outside of gloves before removing. As soon as possible, wash hands thoroughly after applying bait and before eating, drinking, chewing gum, using tobacco or using the toilet and change into clean clothing.

#### FIRST AID

Have this label with you when obtaining treatment advice.

**If swallowed:** Call a poison control center or doctor immediately for treatment advice. Have person sip a glass of water if able to swallow. Do not induce vomiting unless told to do so by the poison control center or doctor.

**If in eyes:** Hold eye open and rinse slowly and gently with water for 15-20 minutes. Remove contact lenses, if present, after the first 5 minutes, then continue rinsing eye. Call a poison control center or doctor for treatment advice.

**If on skin or clothing:** Take off contaminated clothing. Rinse skin with plenty of cool water for 15-20 minutes. Call a poison control center or doctor for treatment advice.

**Treatment for Pet Poisoning:** If animal eats bait, call veterinarian at once.

**Note to Physician or Veterinarian:** Contains chlorophacinone, an anticoagulant. For humans or dogs that have ingested this product, or have obvious poisoning symptoms (bleeding) or prolonged prothrombin times, give Vitamin K1 by intramuscular or oral administration. Check prothrombin time every 3 days until values return to normal.

**ENVIRONMENTAL HAZARDS:** This product is extremely toxic to fish and wildlife. Dogs and predatory and scavenging mammals and birds might be poisoned if they feed upon animals that have eaten the bait. Do not apply where raptors are actively feeding on voles. Do not apply directly to water, or to areas where surface water is present or to intertidal areas below the mean high water mark. Do not contaminate water by cleaning of equipment or disposal of wastes.

#### ENDANGERED SPECIES CONSIDERATIONS:

**NOTICE:** It is a Federal offense to use any pesticide in a manner that results in the death of an endangered species. Use of this product may pose a hazard to endangered or threatened species. Before applying this product, applicators must obtain information regarding the occurrence of endangered species and use limitations for this product. You may call EPA's "Endangered Species Hotline" at 844-447-3813 to obtain an "Interim Measures" pamphlet for your county. You may also consult your local agricultural extension office or state pesticide lead agency to determine if there are any requirements for use of this product.

#### STORAGE AND DISPOSAL

Do not contaminate water, food or feed by storage or disposal.

**Pesticide Storage:** Store in original container in a cool, dry place inaccessible to children and pets.

**Pesticide Disposal:** Wastes resulting from the use of this product may be disposed of on site or at an approved waste disposal facility.

**Container Handling:** This is a nonrefillable container. Do not reuse or refill this container. Completely empty container, then dispose of empty container in trash or at an approved waste disposal facility.

**WARRANTY:** To the extent consistent with applicable law, seller makes no warranty, expressed or implied, concerning the use of this product other than indicated on the label. Buyer assumes all risk of use and/or handling of this material when such use and/or handling is contrary to label instructions.

## RESTRICTED USE PESTICIDE DUE TO HAZARD TO NONTARGET ORGANISMS

For retail sale to and use only by Certified Applicators or persons under their direct supervision and only for those uses covered by the Certified Applicator's Certificate.

# ROZOL<sup>®</sup>

# VOLE BAIT

## FOR CONTROL OF VOLES (*Microtus spp.*) IN ORCHARDS, NONCROP AREAS, NURSERIES AND TREE & FORESTRY PLANTATIONS

Active ingredient: chlorophacinone . . . . . 0.005%  
Inert Ingredients . . . . . 99.995%  
Total . . . . . 100.000%

## KEEP OUT OF REACH OF CHILDREN CAUTION:

See side panel for additional precautionary statements.

# LIPHATECH<sup>®</sup>

Liphatech, Inc.  
3600 W. Elm Street  
Milwaukee, WI 53209  
(800) 351-1476

## DIRECTIONS FOR USE

It is a violation of Federal law to use this product in a manner inconsistent with its labeling. **READ THIS LABEL** and follow all use directions and precautions. Only use for sites, pests, and application methods specified on this label.

### VOLE CONTROL IN FRUIT TREE ORCHARDS (BEARING AND NONBEARING):

**USE RESTRICTIONS:** For control only of voles in some fruit (apple, pear) and stone fruit (peach, cherry, apricot, plum, prune, and nectarine) tree orchards. Apply after fall harvest (including drops), before new spring growth, and during which three consecutive days of rain-free and snow-free weather are expected. Do not apply within 50 feet of any body of surface water or where raptors are actively feeding on voles. Do not apply over bare ground or crops not specified above. Do not allow animals to graze in treated areas. Do not use hay cut after application for feed or bedding. To avoid exposing nontarget organisms, follow the instructions in the "Pesticide disposal" section to ensure proper clean-up of any bait for reuse or disposal. Apply only by **hand spot baiting** and **ground broadcasting**. Do not apply aerially. In Colorado, Florida, New York and Vermont, only apply by "**Hand Spot Baiting**."

**APPLICATION DIRECTIONS:** Before application, examine orchard floor to locate trails and runway systems to be treated. **Hand spot baiting:** Place 1-1/2 ounces of bait (6 tablespoons) in each active hole, trail or runway, (do not exceed 10 lbs per acre). Cover each placement with grass or shingle to avoid exposing nontarget organisms, or place bait in a tamper resistant bait station.

**Ground broadcast baiting:** Using a commercial spreader, uniformly apply 10 lbs per acre. If populations are high, make a second application 1 - 2 months after the first.

In states east of the Mississippi River, infestations of pine vole (*Microtus pinetorum*) may require higher application rates of 20 lbs per acre. The maximum application rate is 40 lbs per acre per year for Pine voles, and 20 lbs per acre per year for other voles.

### VOLE CONTROL IN NURSERIES, TREE AND FORESTRY PLANTATIONS, CHRISTMAS TREE FARMS, AND BORDER AREAS/BUFFER STRIPS ADJACENT TO CROPS:

**USE RESTRICTIONS:** For control of only voles in commercial nurseries, tree and forestry plantations, Christmas tree farms, and border areas and buffer strips adjacent to crops (within 100 feet of the edge of the cropland). This product must not be applied directly to food or feed crops except as specified above. Do not apply within 50 feet of any body of surface water or where raptors are actively feeding on voles. Do not allow animals to graze in treated areas. Do not use hay cut after application for feed or bedding. To avoid exposing nontarget organisms, follow the instructions in the "Pesticide disposal" section to insure proper clean-up of any bait for reuse or disposal. Apply only by **hand spot baiting** and **ground broadcasting**. Do not apply aerially. In Colorado, New York and Vermont, only apply by "**Hand Spot Baiting**." In Florida, only use this product where Pine voles are known to occur and only apply by "**Hand Spot Baiting**."

**APPLICATION DIRECTIONS:** Before application, locate vole trails, runway systems and harborage areas to be treated. **Hand spot baiting:** Place 1-1/2 ounces, (6 tablespoons,) of bait in each active hole, trail or runway, (do not exceed 10 lbs per acre). Cover each placement with grass or shingle to avoid exposing nontarget organisms, or place bait in a tamper resistant bait station.

**Ground broadcast baiting:** Using a commercial spreader, uniformly apply 10 lbs per acre. If populations are high, make a second application 1 - 2 months after the first. In states east of the Mississippi River, infestations of pine vole (*Microtus pinetorum*) may require higher application rates of 20 lbs per acre. The maximum application rate is 40 lbs per acre per year for Pine voles, and 20 lbs per acre per year for other voles.

**VOLE CONTROL IN LAWNS, GOLF COURSES, PARKS, OTHER ORNAMENTAL TURF AREAS, ORNAMENTAL FLOWER AND SHRUB GARDENS: Hand Spot Bait only: Do not apply by aerial or ground broadcast.** For control of only voles (*Microtus spp.*) in lawns, golf courses, parks, other ornamental turf areas, ornamental flower and shrub gardens. Place 1/2 to 1 ounce (2 to 4 tablespoons) of bait in each active hole, trail or runway in areas where voles have been observed or are known to range. If non-target animals/birds are present, place bait in tamper-resistant bait stations. Also apply under tarps used to provide winter protection for turf areas. Apply only one bait spot per trail or runway. If additional vole control is needed, a second application may be made 1 to 2 months after the first application. The maximum application rate is 10 lbs per acre per application, and 20 pounds per acre per year. Do not apply to golf courses or turf grass areas in the state of California. (011717)

# SAFETY DATA SHEET

## Section 1: Identification

**Product identifier:** Rozol® Vole Bait  
**Other identifier(s):** EPA Registration Number 7173-242  
**Uses or restrictions:** Rodenticide with chlorphacinonone  
Restricted Use Pesticide

**Manufacturer:** Liphatech, Inc.  
3600 W. Elm Street, Milwaukee, WI 53209

**Emergency phone:** 800-351-1476 Monday - Friday 8:00 am - 4:30 pm  
(US Central time zone)

**After hours phone:** Animal emergencies: ASPCA at 1-800-345-4735  
All other emergencies: CHEMTREC at 1-800-424-9300

## Section 2: Hazard Identification

**Hazard class:** Specific Target Organ Toxicity (Single exposure), Category 2;  
Specific Target Organ Toxicity (Repeated exposure), Category 2  
**Warning:** May cause damage to blood and reduce the clotting ability of blood if swallowed, inhaled or absorbed through skin. Do not breathe dust. Do not eat, drink or smoke when using this product. Wash hands thoroughly after handling. If exposed or if you feel unwell, call a poison control center or doctor. Dispose of container and contents according to instructions on product label. Store locked up.



## Section 3: Composition / Information on Ingredients

**Hazardous ingredients:**  
Chlorophacinone (CAS registry no. 3691-35-8)..... 0.005%

## Section 4: First Aid Measures

**Emergency overview:** This material may reduce the clotting ability of the blood and cause bleeding. Symptoms of toxicity include lethargy, loss of appetite, reduced clotting ability of blood, and bleeding. Have the product label with you when obtaining treatment advice.

**If swallowed:** Call a poison control center or doctor. Have person sip a glass of water if able to swallow. Do not induce vomiting unless told to do so by the poison control center or doctor.

**If inhaled:** Move person to fresh air. If person is not breathing, call an ambulance, then give artificial respiration and call poison control or doctor.

**If in eyes:** Hold eye open and rinse slowly and gently with water for 15-20 minutes. Remove contact lenses, if present, after the first 5 minutes, then continue rinsing eye. Call a poison control center or doctor.

**If on skin or clothing:** Take off contaminated clothing. Rinse skin with plenty of cool water for 15-20 minutes. Call a poison control center or doctor.

**Note to Physician or Veterinarian:** Contains anticoagulant ingredient. For humans or animals ingesting bait and/or showing obvious poisoning symptoms (bleeding or prolonged prothrombin times), give Vitamin K<sub>1</sub> intramuscularly or orally. In severe cases, blood transfusions may be needed.

## Section 5: Fire-fighting Measures

**Extinguishing media:** Use media suitable for the surrounding fire  
**Specific fire or explosion hazards:** None known  
**Special cautions for firefighters:** Wear self-contained breathing apparatus (full facepiece) & full protective clothing. Contain runoff to prevent pollution.

## Section 6: Accidental Release Measures

**Precautions, PPE and Procedures:** Wearing PPE as specified in Section 8, isolate and contain spill. Limit access to spill area to necessary personnel. Do not allow spilled material to enter sewers, streams or other waters.  
**Methods and materials:** Scoop up spilled material and place in a closed, labeled container for use according to label instructions or disposal.

## Section 7: Handling and Storage

**Precautions for safe handling:** Read the entire product label before using this rodenticide. **Conditions for safe storage:** Store in original container in a cool, dry area out of reach of children, pets and domestic animals. Do not contaminate water, food or feed. Keep container tightly closed. Do not remove or destroy the product label.

## Section 8: Exposure Controls / Personal Protection

**Established exposure limits:** Not applicable  
**Appropriate engineering controls:** Special ventilation is not required for the normal handling and use of this product when following label instructions.

**Individual protection measures:** Wear long-sleeved shirt, long pants, shoes, socks and waterproof gloves when handling this product. Follow manufacturer's instructions for cleaning/maintaining PPE, or else wash with detergent and hot water. Keep and wash PPE separately from other laundry. Remove PPE immediately after handling this product. Wash the outside of gloves before removing. Wash hands thoroughly after applying bait and before eating, drinking, chewing gum, using tobacco or using the toilet, and change into clean clothing.

## Section 9: Physical and Chemical Properties

**Appearance:** Solid pellets, off-white color, raw grain odor. Odor threshold not determined.

<b>Water solubility:</b> Negligible	<b>pH:</b> Not applicable
<b>Relative density:</b> 1.26 g/cc	<b>Viscosity:</b> Not applicable
<b>% Volatile (volume):</b> Not applicable	<b>Evaporation rate:</b> Not applicable
<b>Vapor density:</b> Not applicable	<b>Vapor pressure:</b> Not applicable
<b>Boiling point:</b> Not determined	<b>Freezing point:</b> Not applicable
<b>Flash point (ASTM D92):</b> >190 °C	<b>Autoignition temp.:</b> Not determined
<b>Flammability:</b> Not a flammable solid	<b>Decomposition temp.:</b> Not determined
<b>Explosive limits - Lower limit:</b> Not applicable; <b>Upper limit:</b> Not applicable	
<b>Partition coefficient (n-octanol/water):</b> Not applicable	

## Section 10: Stability and Reactivity

**Reactivity:** Not reactive, not sensitive to shock or static discharge  
**Chemical stability:** Stable  
**Incompatible materials:** None  
**Hazardous decomposition products:** Oxides of carbon

**Hazardous reactions:** None  
**Conditions to avoid:** None

## Section 11: Toxicological Information

**Likely routes of exposure:** Ingestion, skin absorption.  
**Symptoms of toxicity:** Lethargy, loss of appetite, reduced clotting ability of blood, and bleeding.

**Eye effects/eye irritation:** Mild, transient irritant  
**Acute oral effects:** LD<sub>50</sub> (oral-rat): >5000 mg/kg  
**Acute inhalation effects:** LC<sub>50</sub> (rat, 4 hour): 186 mg/L (extrapolated)  
**Acute dermal effects:** LD<sub>50</sub> (dermal-rabbit): >2000 mg/kg  
**Skin irritation:** Non-irritating  
**Skin sensitization:** Not a skin sensitizer  
**Carcinogenicity:** No ingredient listed by NTP, IARC or OSHA

## Section 12: Ecological Information

This product is extremely toxic to fish and wildlife. Do not apply this product directly to water, where surface water is present or to intertidal areas below the mean high water mark. Carefully follow label cautions and directions to reduce hazards to children, pets and non-target wildlife.

## Section 13: Disposal Considerations

**Disposal:** Wastes resulting from the use of this product according to the label instructions must be disposed of as specified on the product label.  
**RCRA waste status:** This product is not regulated as a hazardous waste under Federal law. State and local regulation may affect the disposal of this product. Consult your state or local environmental agency for disposal of waste generated other than by use according to label instructions.

## Section 14: Transport Information

**Transportation data (49 CFR):** This product is not regulated as a hazardous material for all modes of transportation within the U.S.  
**Hazard Class, Packing Group and UN ID No.:** Not applicable

## Section 15: Regulatory Information

**TSCA:** All components of this product are listed on the TSCA inventory.  
**SARA section 313:** Contains no reportable components.  
**CA Proposition 65:** Contains no substances subject to Prop 65 requirements.  
**FIFRA:** This product is registered as a pesticide with the U.S. Environmental Protection Agency. The label requirements under Federal pesticide law differ from the classification criteria and hazard information required by OSHA on this Safety Data Sheet. Read and follow all cautions, directions and use restrictions on the product label on the container.

## Section 16: Other Information

**Prepared by:** K. Paavola **Date:** 10 November 2017  
This Safety Data Sheet is believed to be accurate at time of publication. No warranty, expressed or implied, is made with regard to this information. This information may not be adequate for every application, and the user must determine the suitability of this information due to the manner or conditions of use or storage, or local regulation.